

### INTRODUCTION

The Yemen Joint Market Monitoring Initiative (JMMI) was launched by REACH in collaboration with the Water, Sanitation and Hygiene (WASH) Cluster and Cash and Market Working Group (CMWG) to support humanitarian actors with the objective of harmonizing price monitoring among all cash actors in Yemen. The JMMI incorporates information on market systems including price levels and supply chains. The basket of goods to be assessed comprises eight non-food items (NFIs), including fuel, water and hygiene products, reflecting the programmatic areas of the WASH Cluster.

### METHODOLOGY

Data collection for the fourth round of the JMMI took place between the 27 June and 4 July 2018. Enumerators from 9 partner organisations collected data in 53 districts across 15 governorates, through Key Informant (KI) interviews. The sample of vendors was selected from markets of various sizes in both urban and rural areas. The data collected has been analysed in comparison with the price quotations recorded during the Multi-Agency Joint Cash Study in September 2017 and previous Weekly Price Monitoring Initiative, which began during the economic blockade of Yemen in November 2017. Findings of this analysis will be presented in the form of both this factsheet and a supplementary dataset, published on a monthly basis.

### KEY FINDINGS

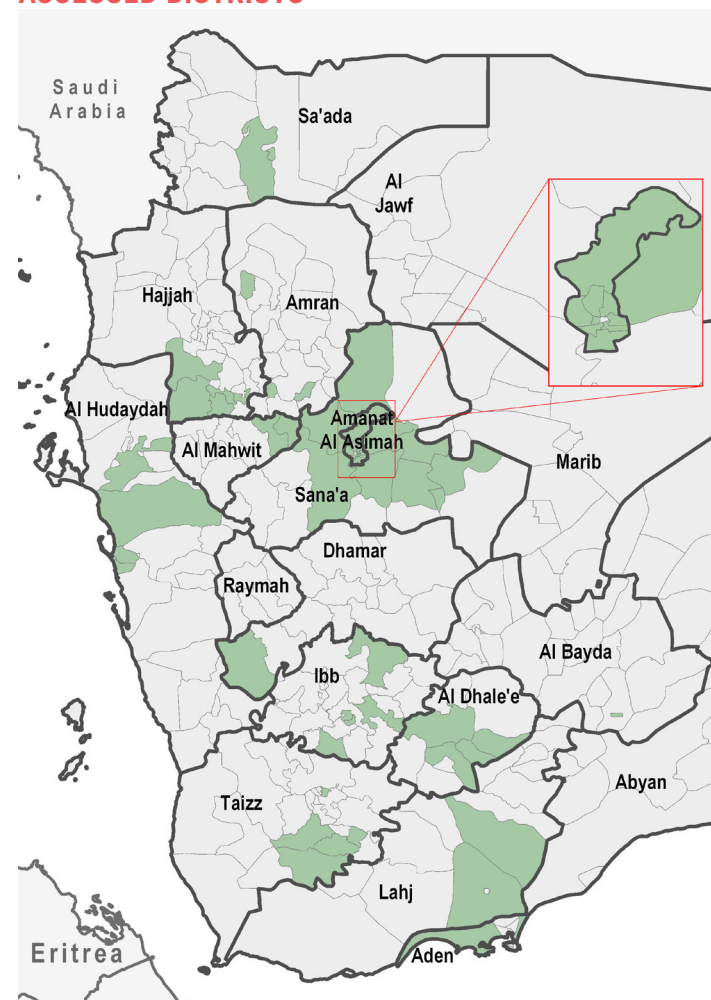
#### PRICE MONITORING OVERVIEW

- At the time of data collection, the port of Al Hudaydah was still open and remained the main supplier for the north west of Yemen for fuel vendors, while Aden continued to supply vendors in the south west.
- Prices for petrol and diesel were higher among vendor KIs located in districts supplied by Al Hudaydah, than those supplied by Aden.
- Water trucking prices vary significantly through the governorates assessed, from 500 YER in the governorates of Amran and Al Hudaydah to 2,500 YER in the governorate of Aden.
- Cash is the major payment modality accepted by vendor KIs, while 16% of them also reported providing credit for some of their costumers.

#### SUPPLY OVERVIEW

- The governorates of Al Dhale'e and Hajjah have the highest recorded restocking times. Among all the products assessed, hygiene items usually have the highest restocking times.
- Fuel supply routes between Marib and the north west of the country appear to have halted, with none of the vendor KIs in this region reporting that they were currently receiving supplies from Marib.
- There was a significant increase in the number of vendors mentioning multiple constraints and challenges. In particular, the proportion of vendors citing a shortage of market demand almost doubled compared to May.

### ASSESSED DISTRICTS



### MONTHLY FIGURES

8 Participating partners  
53 Districts assessed  
341 Vendors surveyed

### EXCHANGE RATES<sup>1</sup>

1 US Dollar (USD) is equivalent to 250 Yemeni Riyal (YER) <i>Official</i>	1 US Dollar (USD) is equivalent to 485 Yemeni Riyal (YER) <i>Parallel market</i>
--	---

### PARTNERS

CYF NFDHR NFDH ROC	SCI SDF YSD YFCA
-----------------------------	---------------------------

### ASSESSED ITEMS

Petrol	Water trucking	Soap
Diesel	Treated water	Laundry powder
	Bottled water	Sanitary napkins

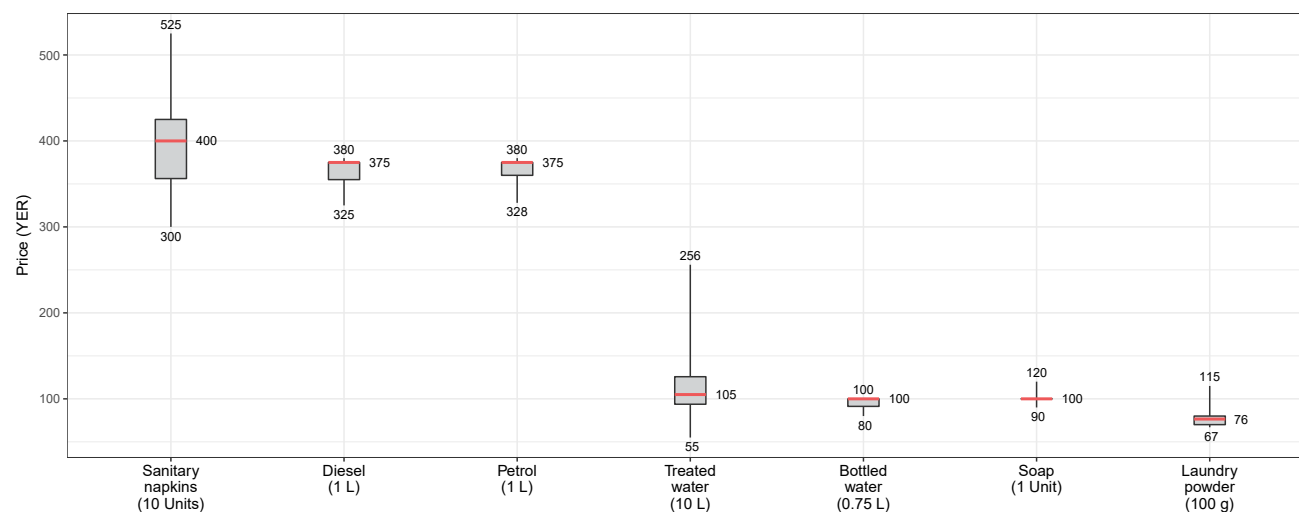
# PRICE MONITORING OVERVIEW FOR YEMEN

## MEDIAN PRICE PER GOVERNORATE (IN YER)

Governorate	Petrol (1L)	Diesel (1L)	Treated water (10L)	Bottled water (0.75L)	Soap (1 Unit)	Laundry powder (100g)	Sanitary napkins (10)	Water trucking (1m³)
Aden	328	333	119	100	100	115	405	2,500
Al Bayda	365	380	90	80	95	80	442	1,000
Al Dhale'e	333	336	125	100	110	70	375	2,250
Al Hudaydah	380	375	128	100	100	80	300	500
Al Mahwit	375	375	NA	98	99	80	425	2,125
Amanat Al Asimah	375	375	90	90	110	70	397	1,000
Amran	375	375	130	95	100	67	525	500
Dhamar	NA	NA	55	90	90	80	300	NA
Hajjah	372	373	NA	100	100	73	400	2,350
Ibb	375	375	100	100	120	70	350	2,000
Lahj	328	325	95	100	100	73	313	1,125
Sa'ada	378	375	256	100	100	83	425	1,313
Sana'a	375	375	110	90	100	83	400	1,190
Taizz	360	355	100	100	100	70	425	1,250

Note: red indicates the highest median price; green the lowest; and NA when data is not available

## DISTRIBUTION OF PRICES ACROSS GOVERNORATES

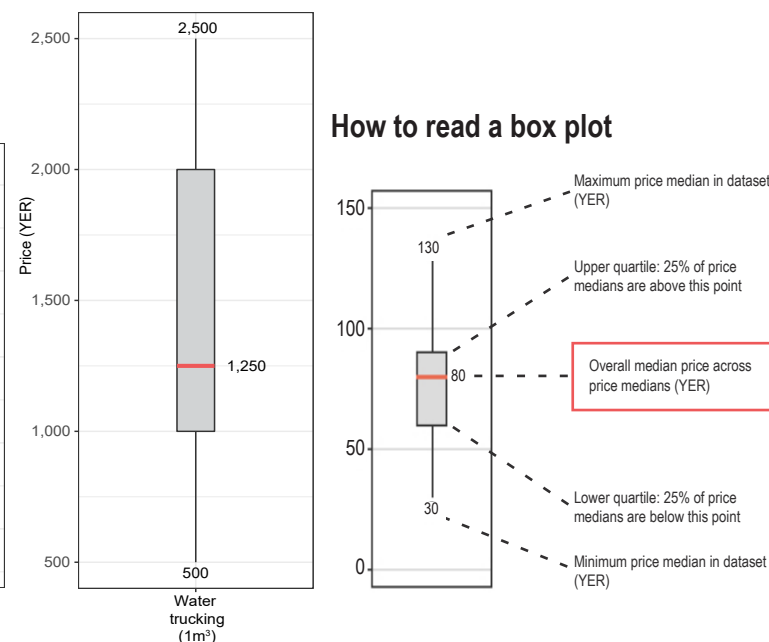


## MEDIAN PRICE PER ITEM SINCE SEPTEMBER 2017 (IN YER)\*

Item	September (baseline)	November	March	April	May	June	Changes (May-June) in %
Diesel	235	394	350	353	365	375	+2.74%
Petrol	275	349	360	358	365	375	+2.74%
Treated water	NA	175	200	162	200	210^	+5.00%
Bottled water	70	100	100	100	100	100	0.00%
Soap	88	NA	100	113	100	100	0.00%
Sanitary napkins	250	NA	363	360	350	400	+14.29%
Laundry powder	50	NA	85	79	76	77	+1.65%
Water trucking	825	1,700	1,292	1,250	1,500	1,250	-16.67%

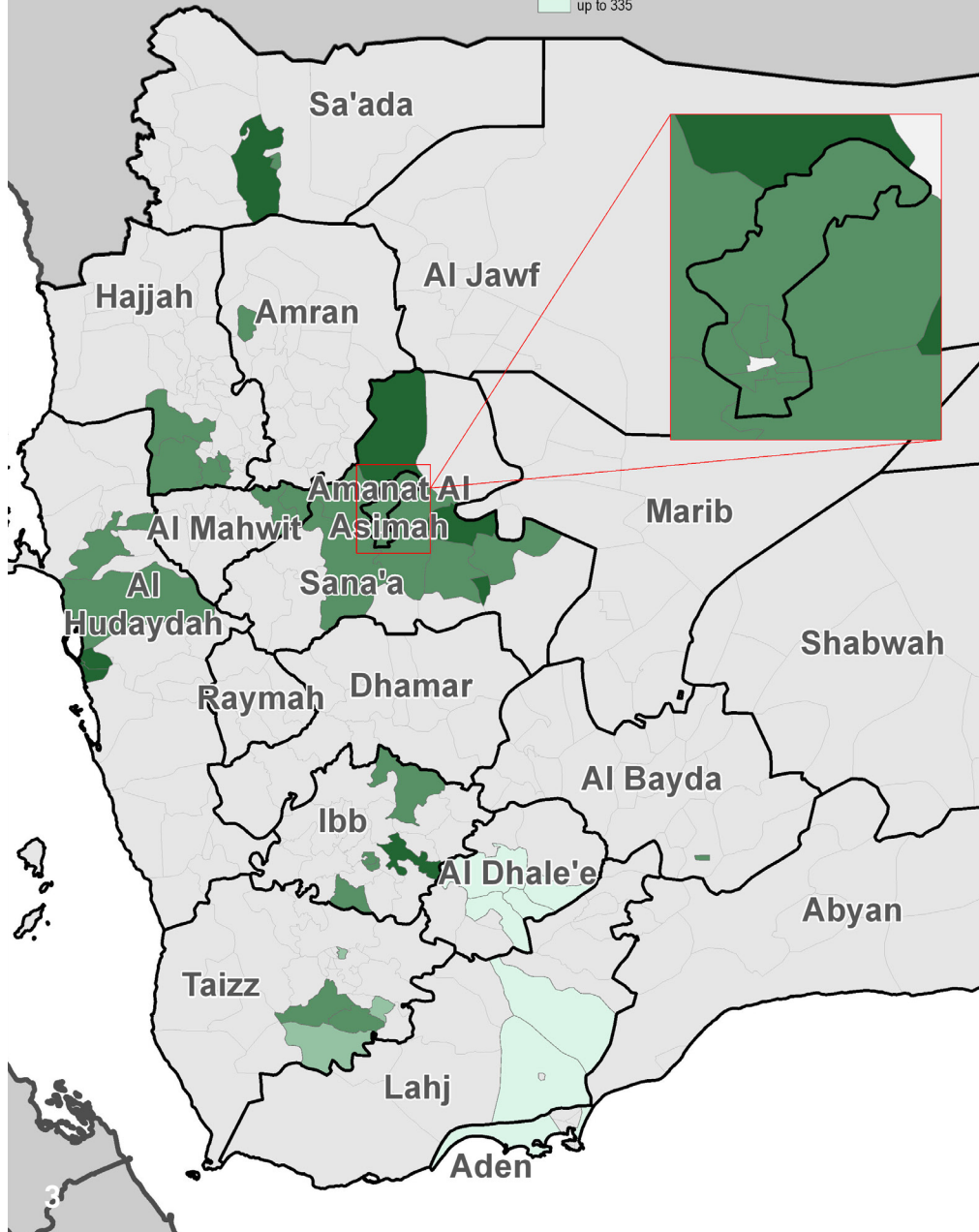
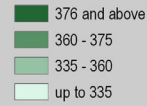
\* Price variations and the percentage change will be partially influenced by fluctuations in the sample of districts and markets assessed.  
 ^ The percentage change for treated water is calculated based on the normalised price for 20L.

Data recorded in September 2017 for the Multi-Agency Joint Cash Study was used as the baseline for this analysis. The table above illustrates the rise in price levels observed during the economic blockade in November 2017. While prices stabilised and then decreased over the past seven months, price levels have not returned to the pre-blockade levels.



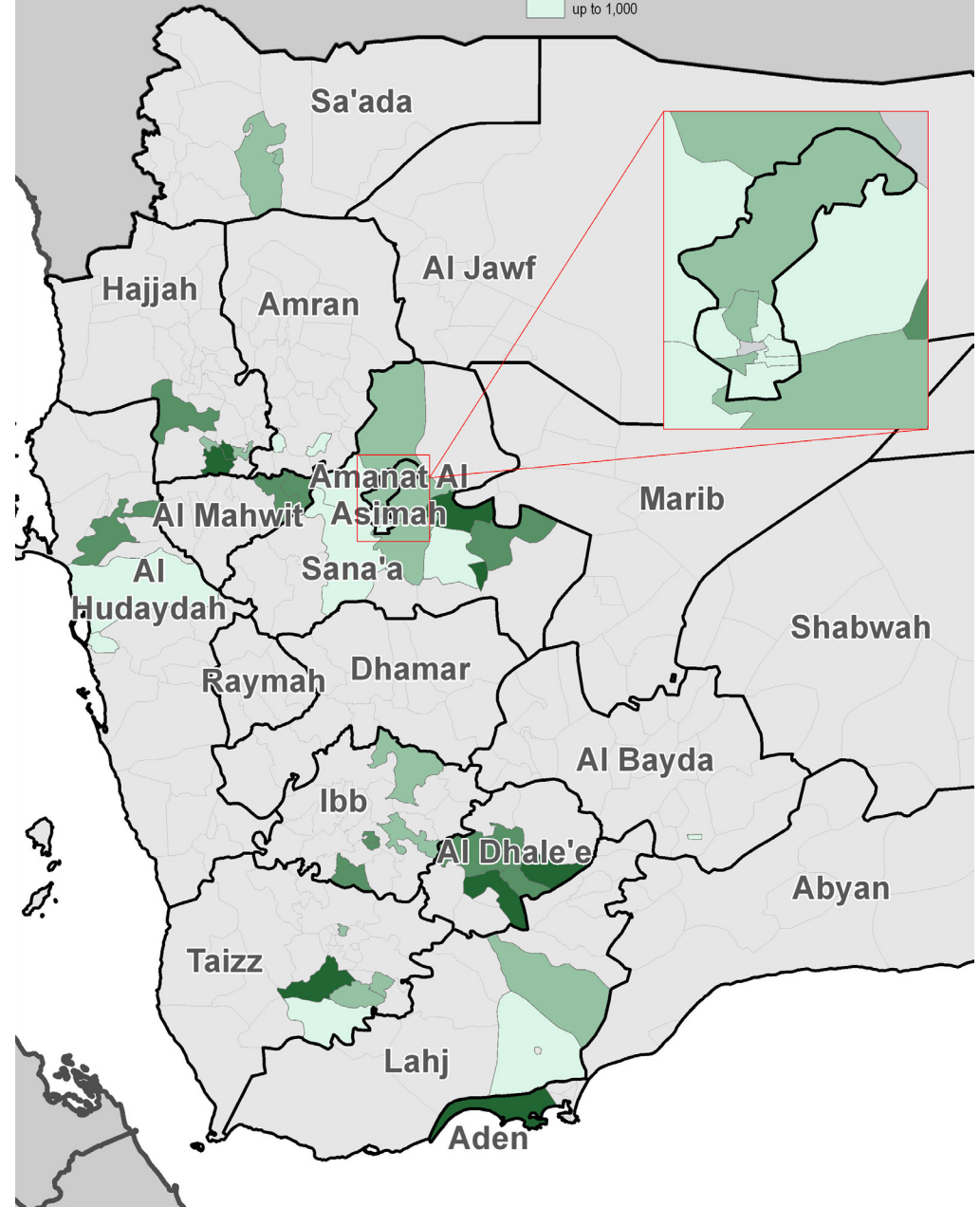
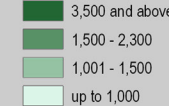
# Petrol Prices

Median price of Petrol per district per liter (YER)



# Water Trucking Prices

Median price of Water Trucking per district per liter (YER)



Note: the differences in the number of districts shown between the two maps for fuel and water prices is because the methodology-stipulated requirement for a minimum of three price quotations per district was not met in some areas.



# SUPPLY OVERVIEW FOR YEMEN

## AVERAGE RESTOCKING TIME REPORTED (DAYS)

Governorate	Diesel	Petrol	Bottled water	Treated water	Soap	Sanitary napkins	Laundry powder
Aden	3	7	1	1	1	2	2
Al Bayda	2	2	1	1	1	1	3
Al Dhale'e	12	15	6	10	16	17	18
Al Hudaydah	3	3	2	1	2	1	2
Al Mahwit	5	5	2	1	2	2	2
Amanat Al Asimah	3	3	3	1	13	9	15
Amran	2	2	3	4	10	9	17
Dhamar	NA	NA	2	2	3	3	3
Hajjah	8	9	12	NA	17	16	16
Ibb	4	5	3	4	8	6	9
Lahj	2	3	1	1	2	2	2
Sa'ada	14	14	5	1	5	5	10
Sana'a	5	5	2	1	2	2	3
Taizz	3	3	1	1	5	2	1

### OVERVIEW FOR WATER TRUCKING

63% of water trucking vendor KIs stated that they charged additional delivery costs based upon the distance between the water source and delivery point. The price for 10km is **8,000 YER**, and for every **10 km** travelled by the vendor KIs, there is an additional delivery cost of **4,000 YER** for an entire water truck.

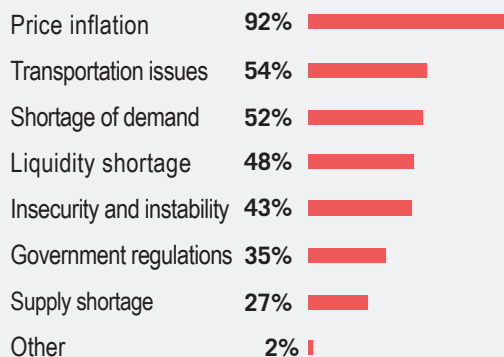
**80%** of water trucking vendor KIs stated that they sell non-chlorinated water.

**92%** of water vendor KIs reported sourcing water from a pumping station or a borehole, **4%** from water spring and **3%** from a treatment station.

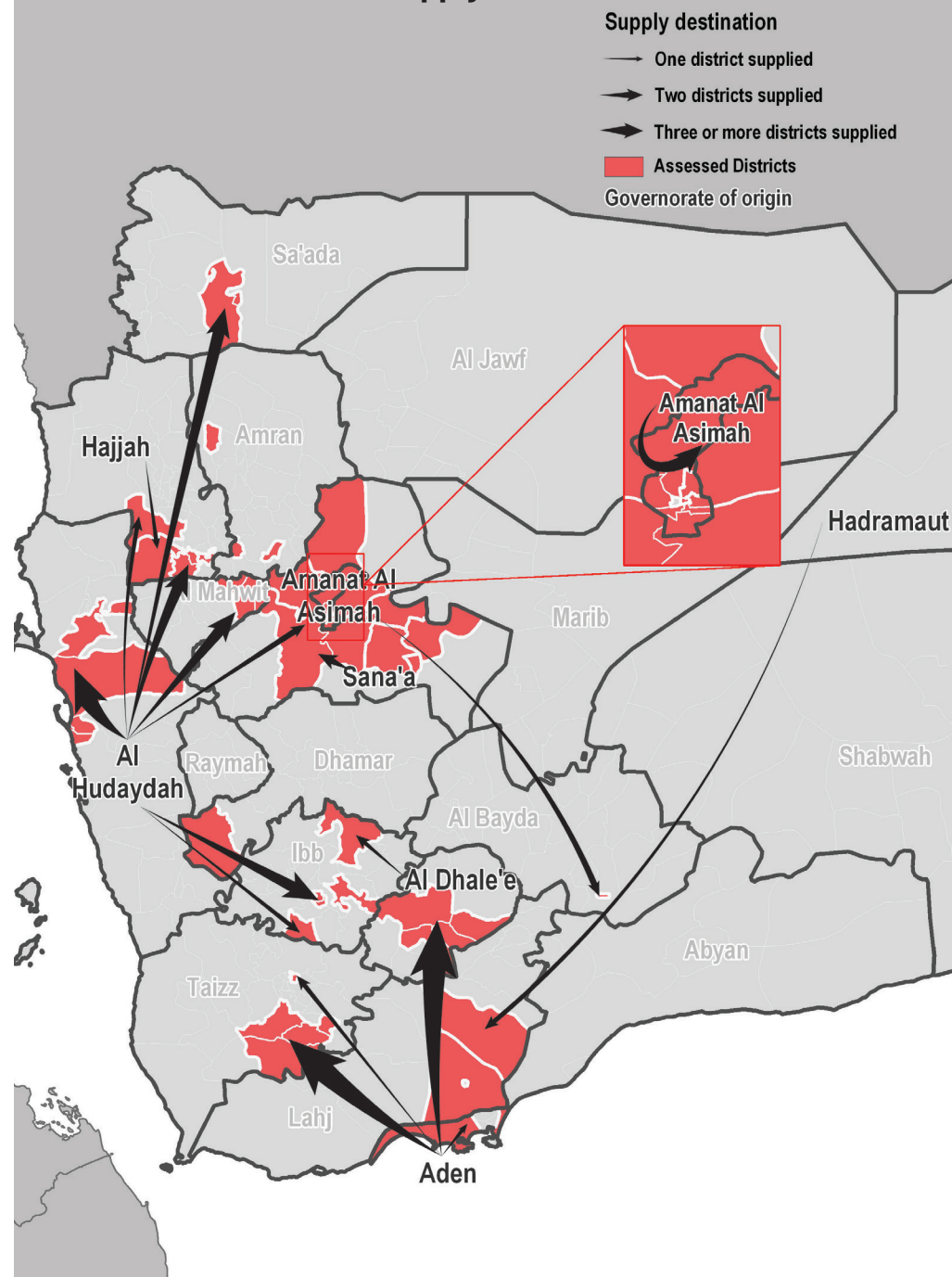
**96%** of water vendor KIs reported that they acquire their water from privately owned sources.

### CONSTRAINTS AND CHALLENGES

Vendor KIs were asked to state which challenges they were currently facing in buying and selling their products. The figures below represent the proportion of vendor KIs who stated that they were facing each challenge:



### Petrol and Diesel main supply chains in assessed districts



## APPENDIX

### WHAT IS THE INTERSECTOR CASH AND MARKET WORKING GROUP?

With the emerging crisis in 2014, the humanitarian actors in Yemen started using cash and vouchers as a response tool to meet the immediate needs of the Yemeni population. The CMWG was established to provide a platform for discussion and setting standards/recommendations on cash and market-based responses (inclusive of cash and vouchers) for the people in need in Yemen. REACH and the CMWG have worked together on joint assessments since the Inter-Agency Joint Cash Study published in December 2017.<sup>2</sup> The Joint Market Monitoring Initiative was developed by CMWG, the WASH Cluster for Yemen and REACH Initiative in order to conduct harmonized price monitoring among all cash actors in Yemen.

### ADDITIONAL INFORMATION ON METHODOLOGY

To be included in the Yemen Market Monitoring Initiative, markets must be either a single permanent market, or a local community where multiple shops are located in close proximity to one another. Where possible, markets are selected when there is at least one wholesaler operating in the market and there are enough shops located in the market to provide a minimum of three price quotations per product.

Participating organisations train their enumerators on the Market Monitoring methodology and data collection tools using standard training materials developed by REACH. Each month, enumerators conduct key informant interviews with market vendors to collect price quotations for each product from a minimum of two markets, from which a median price is identified.

One data collection tool is used within the JMMI framework by the enumerators. They have to record the location and type of market before obtaining price quotations. In addition to price levels, vendors are asked to state the current availability of the product in their local area, the location of their supplier, the number of days it takes to restock the product in their local area, and the constraints which they are facing in purchasing and retailing the item in question. There are additional questions for water trucking, to gauge the impact of delivery distance upon price level.

Following data collection, REACH compiles and cleans all partners' data, normalising prices and cross-checking outliers. The cleaned data is then analysed by commodity and by governorate. Prices are divided into quartiles and boxplots are created to help CMWG members understand the distribution of prices. To illustrate local variations in prices and availability, REACH uses the collected data to map the price of each type of item in each district. The cleaned data sets are available on the REACH Resource Centre and are distributed to all participating partners, as well as to interested clusters and the broader humanitarian community.

### LIMITATIONS

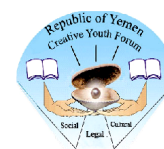
Due to issues of access and security across Yemen, the districts included in the JMMI will vary on a monthly basis, and as such there are a limited number of districts for which trends can be assessed over time. Governorate level data is composed of the respective districts assessed in a given month, and so the findings are not representative of markets in all areas of the governorate. Moreover, Percent changes calculated at governorate level may be due to different coverage. Finally, the market monitoring

process has been coordinated remotely by REACH, which inherently presents further challenges in terms of enumerator training, consistent communication and verification of results which are harder to resolve from afar.

### CALCULATION OF MEDIAN CHEAPEST PRICE

The aggregated median price table is calculated by taking the median of the minimum-reported prices of a governorate's districts. In turn, the minimum-reported prices for each district are calculated from the average of the minimum reported prices of the constituent markets assessed.

### PARTICIPATING PARTNERS INCLUDE



### ABOUT REACH

REACH is a joint initiative that facilitates the development of information tools and products that enhance the capacity of aid actors to make evidence-based decisions in emergency, recovery and development contexts. By doing so, REACH contributes to ensuring that communities affected by emergencies receive the support they need. All REACH activities are conducted in support to and within the framework of inter-agency aid coordination mechanisms. For more information, please visit our website at [www.reach-initiative.org](http://www.reach-initiative.org), contact us directly at [yemen@reach-initiative.org](mailto:yemen@reach-initiative.org) or follow us on Twitter at [@REACH\\_info](https://twitter.com/REACH_info).

### ENDNOTES

<sup>1</sup> Official rate: retrieved from [www.xe.com](http://www.xe.com) (15 June 2018). Parallel market rate: Ministry of Planning & International Cooperation, *Yemen's Economy During War and Conflict. Economic Studies & Forecasting Sector*, June 2018.

<sup>2</sup> REACH, *Multi-Agency Joint Cash Study: Market Functionality and Community Perception of Cash Based Assistance*. December 2017.

