



INTRODUCTION

The Yemen Joint Market Monitoring Initiative (JMMI) was launched by REACH in collaboration with the Water, Sanitation and Hygiene (WASH) Cluster and the Cash and Market Working Group (CMWG) to support humanitarian actors with the objective of harmonizing price monitoring among all cash actors in Yemen. The JMMI incorporates information on market systems including price levels and supply chains. The basket of goods to be assessed comprises eight non-food items (NFIs), including fuel, water and hygiene products, reflecting the programmatic areas of the WASH Cluster.

METHODOLOGY

Data collection for the seventh round of the JMMI took place between the 21 - 27 September 2018. Enumerators from 12 partner organisations collected data in 50 districts across 14 governorates, through Key Informant (KI) interviews. The sample of vendors was selected by the organisations from markets of various sizes in both urban and rural areas. The data collected has been analysed in comparison with the price quotations recorded during the Multi-Agency Joint Cash Study in September 2017 and previous Weekly Price Monitoring Initiative, which began during the economic blockade of Yemen in November 2017. Findings of this analysis are presented in the form of both this factsheet and a supplementary dataset, published on a monthly basis.

KEY FINDINGS

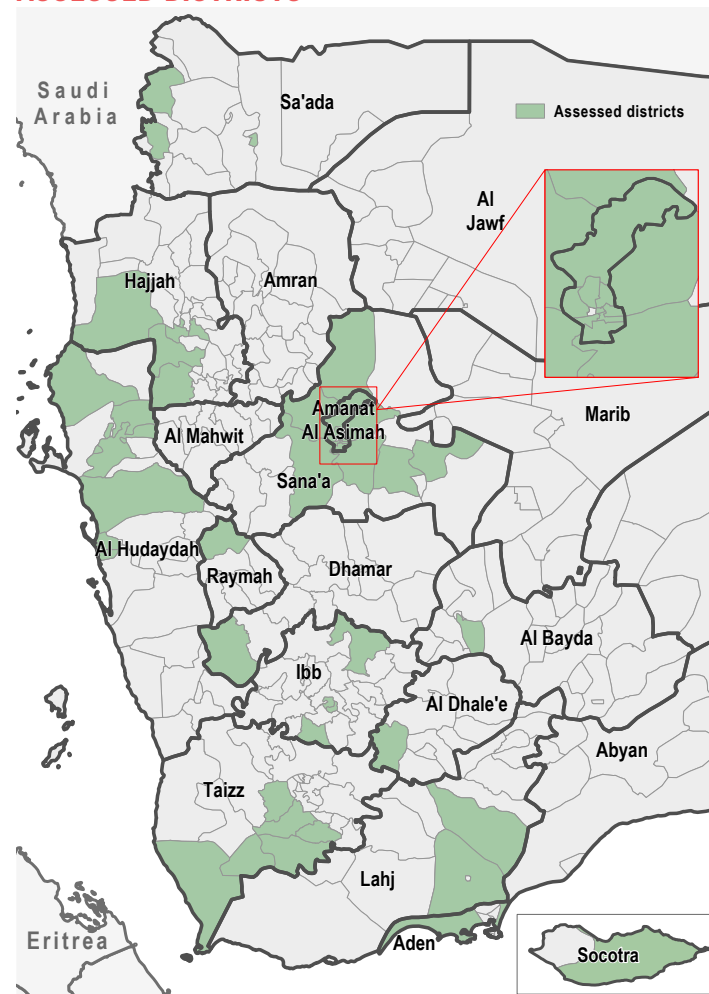
PRICE MONITORING OVERVIEW

- Between August and September, the value of the Yemeni Riyal (YER) continued to depreciate against the US Dollar (USD). At the time of data collection the exchange rate in the parallel market was 670 YER per USD, an increase of 12% when compared to August.
- Median price levels for fuel commodities increased between August and September. Fuel and water trucking prices had the greatest increase: 44.38% and 58.13% for diesel and petrol respectively, while water trucking prices increased by 41.67%, as water trucking prices are largely dependent on fuel prices.
- Median price levels of other commodities also increased compared to last month with, among others, an increase of 25% for sanitary napkins, and of 21.74% for bottled water.
- The aggregated median WASH Survival Minimum Expenditure Basket (SMEB) cost is 11,563 YER.

SUPPLY OVERVIEW

- Fuel prices were higher in districts supplied by the governorate of Al Hudaydah than by districts supplied by Aden. The highest prices were found in districts located in governorates of Hajjah, Amanat al Asimah and Sana'a, with prices up to 1,000 YER.
- The median of restocking time reported by fuel vendors at national level was five days.
- Price inflation and transportation issues remain the challenges most frequently cited by vendors. Shortage of fuel was increasingly highlighted as a main challenge.

ASSESSED DISTRICTS



MONTHLY FIGURES

12 Participating partners
50 Districts assessed
336 Vendors surveyed

EXCHANGE RATES¹

1 US Dollar (USD) is equivalent to 250 Yemeni Riyal (YER) <i>Official</i>	1 US Dollar (USD) is equivalent to 670 Yemeni Riyal (YER) <i>Parallel market</i>
--	---

PARTNERS

CYF	NRC	SCI
IRY	OXFAM	SDF
NFDHR	OCFD	YFCA
NFHD	ROC	YSD

ASSESSED ITEMS

Petrol	Water trucking	Soap
Diesel	Treated water	Laundry powder
	Bottled water	Sanitary napkins

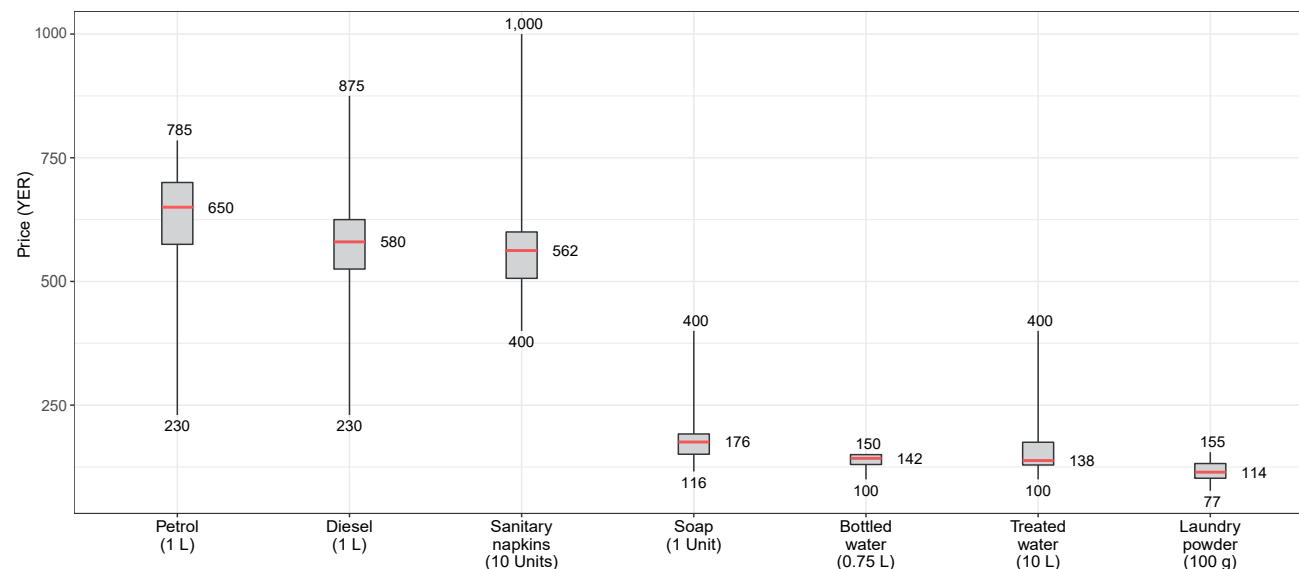
PRICE MONITORING OVERVIEW FOR YEMEN

MEDIAN PRICE PER GOVERNORATE (IN YER)

Governorate	Petrol (1L)	Diesel (1L)	Bottled water (0.75L)	Treated water (10L)	Soap (1 Unit)	Laundry powder (100g)	Sanitary napkins (10)	Water trucking (1m³)
Aden	450	450	135	138	200	136	575	5,000
Al Bayda	785	875	145	238	180	155	625	1,200
Al Dhale'e	600	575	150	NA	188	80	1,000	6,000
Al Hudaydah	675	600	150	120	171	120	500	2,000
Amanat Al Asimah	575	580	120	120	116	100	460	1,367
Dhamar	687	594	130	400	150	110	490	6,000
Hajjah	700	625	150	138	171	109	600	4,125
Ibb	650	525	150	200	220	91	400	2,750
Lahj	496	450	100	150	186	77	525	NA
Raymah	750	650	150	NA	400	150	600	3,000
Sa'ada	NA	NA	130	100	193	150	550	1,000
Sana'a	720	650	128	138	150	110	600	1,263
Socotra	230	230	140	NA	145	120	610	1,200
Taizz	600	549	148	145	153	119	550	2,000

Note: red indicates the highest median price; green the lowest; and NA when data is not available

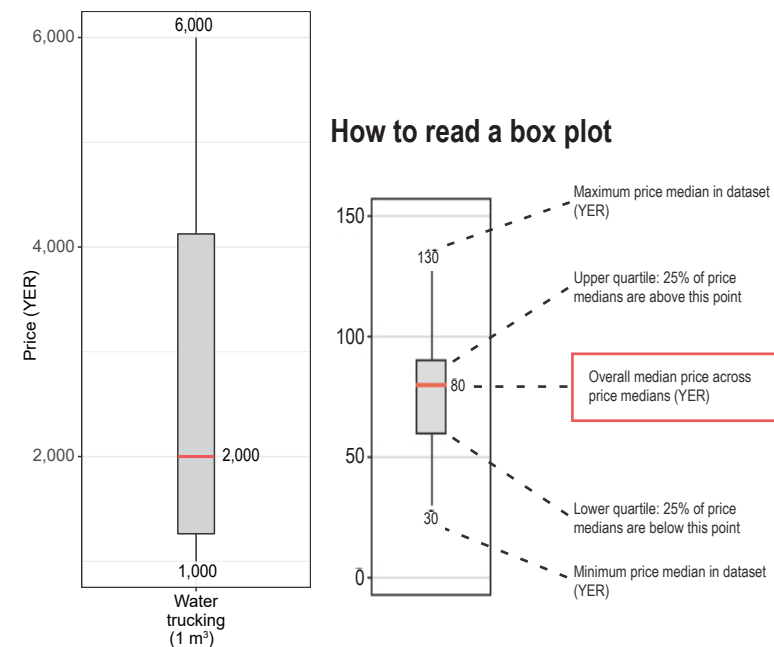
DISTRIBUTION OF PRICES ACROSS GOVERNORATES



MEDIAN PRICE LEVELS, PER ITEM, PER MONTH (IN YER)*

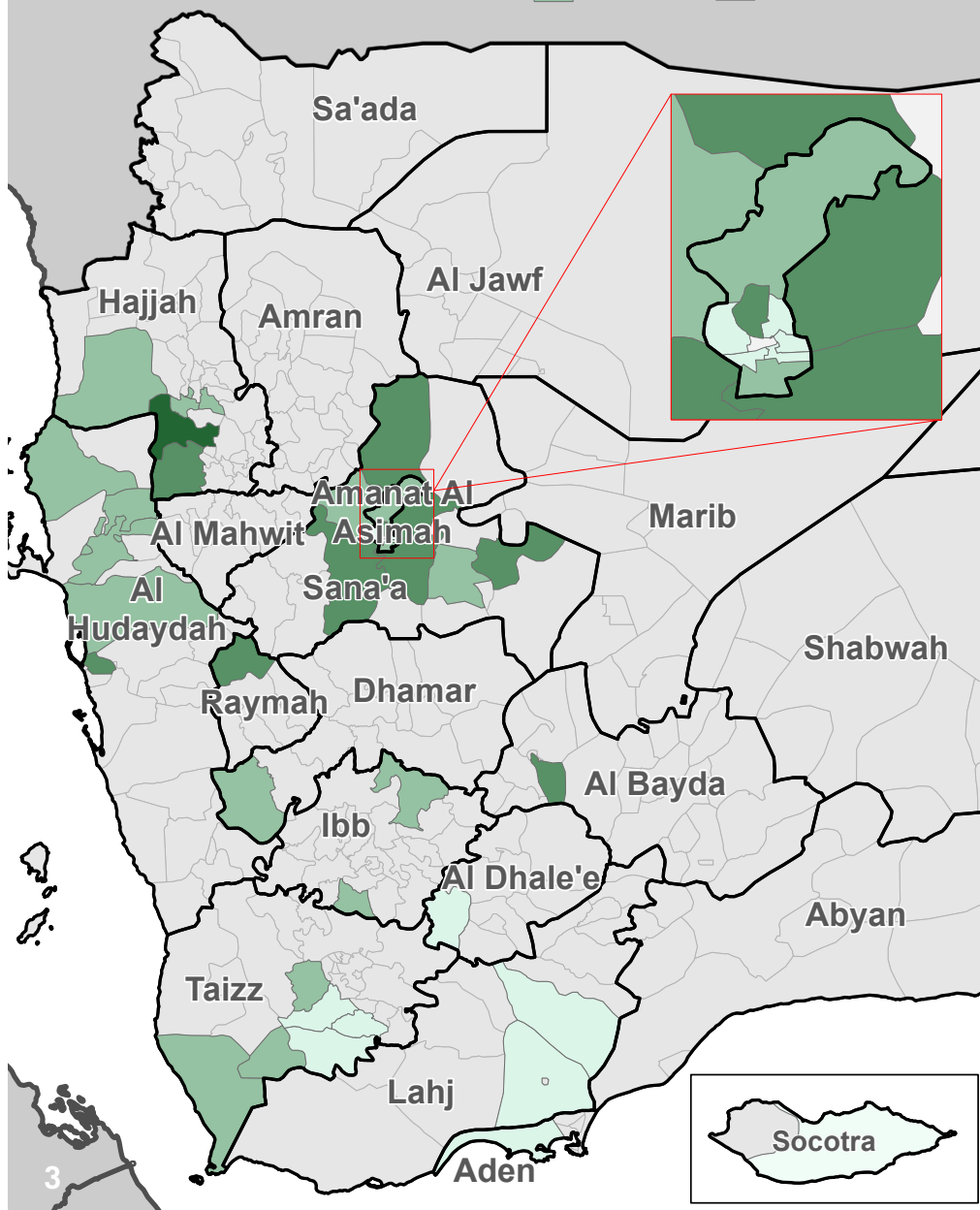
Item	September 2017 (baseline)^	November 2017^	June 2018	July 2018	August 2018	September 2018	% Change (Aug-Sept)
Diesel	235	394	375	375	400	578	+44.38%
Petrol	275	349	375	375	415	656	+58.13%
Treated water	NA	175 ↯	105	100	123	140	+14.29%
Bottled water	70	100	100	100	115	140	+21.74%
Soap	88	NA	100	131	150	171	+14.00%
Sanitary napkins	250	NA	400	400	450	563	+25.00%
Laundry powder	50	NA	77	93	100	117	+16.75%
Water trucking	825	1,700	1,250	1,350	1,200	1,700	+41.67%

* Price variations and the percentage change are calculated using data from markets that were assessed in both consecutive months.
 ^ Price levels for September are the price quotations recorded during the Multi-Agency Joint Cash Study in September 2017, while prices for November have been recorded during the Weekly Price Monitoring Initiative organised by the WASH Cluster after the blockade in November 2017.
 ↯ Treated water prices for November 2017 were for 20L, while the JMMI collects prices for 10L.



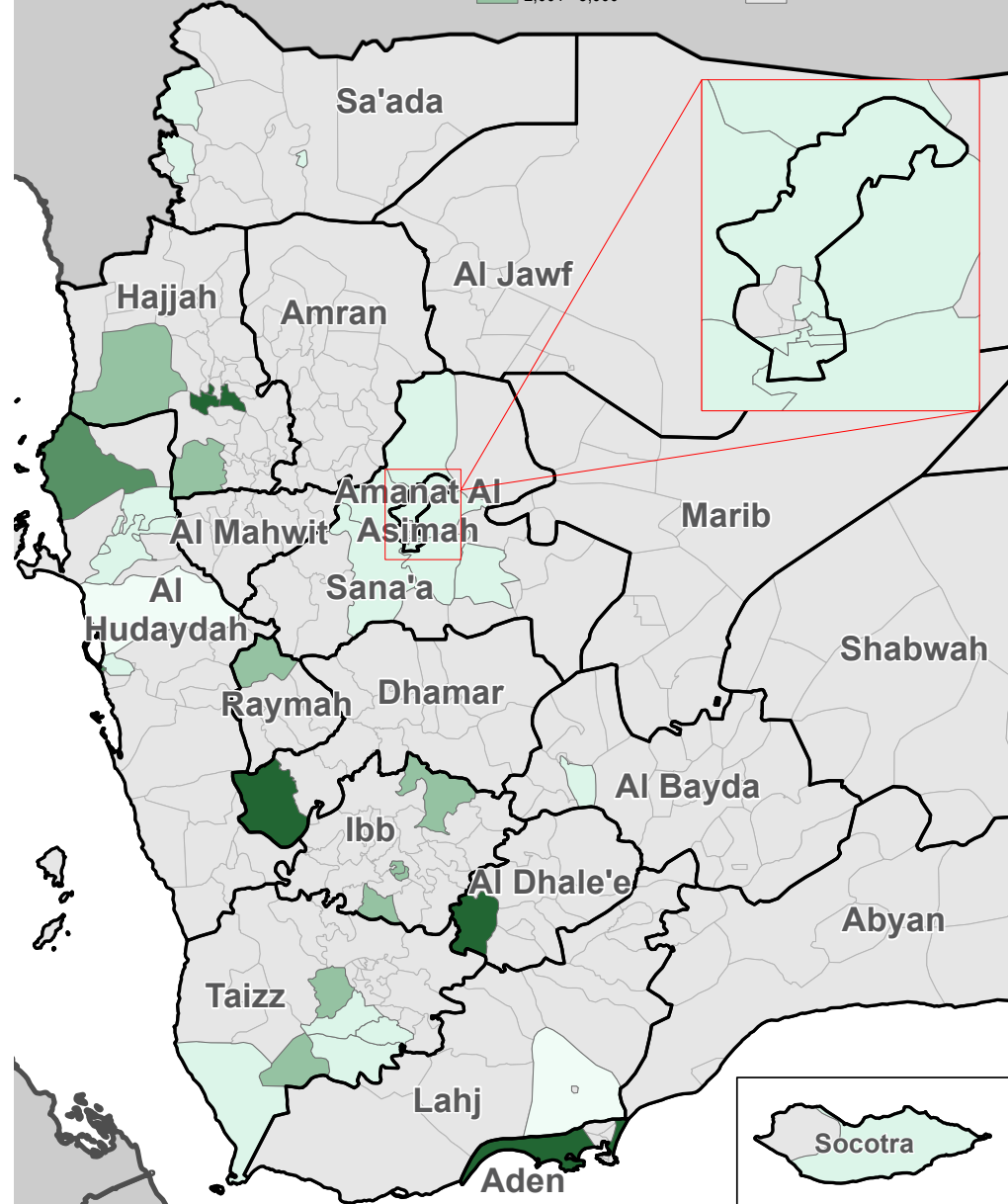
Petrol Prices

Median price of Petrol per district per liter (YER)



Water Trucking Prices

Median price of Water Trucking per district per cubic meter (YER)



Note: the differences in the number of districts shown between the two maps for fuel and water prices is because the methodology-stipulated requirement for a minimum of three price quotations per district was not met in some areas.

WASH SMEB COST OVERVIEW FOR YEMEN

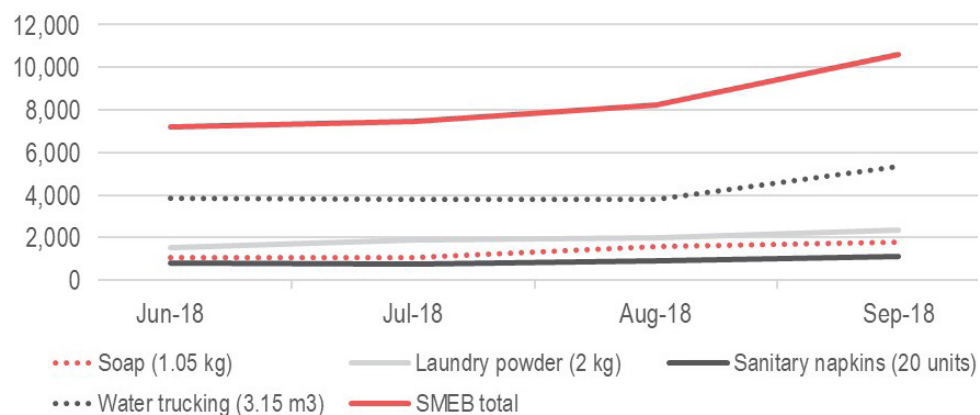
MEDIAN WASH SMEB PRICES BY GOVERNORATE (IN YER)*

Governorate	Soap (10.5 kg)	Laundry powder (2 kg)	Sanitary napkins (20 units)	Water trucking (3.15 m³)	WASH SMEB total
Aden	2,100	2,727	1,150	15,750	21,727
Al Bayda	1,890	3,100	1,250	3,780	10,020
Al Dhale'e	1,969	1,600	2,000	18,900	24,469
Al Hudaydah	1,800	2,400	1,000	6,300	11,500
Amanat Al Asimah	1,218	2,000	920	4,304	8,442
Dhamar	1,575	2,200	980	18,900	23,655
Hajjah	1,800	2,182	1,200	12,994	18,176
Ibb	2,310	1,818	800	8,663	13,591
Raymah	4,200	3,000	1,200	9,450	17,850
Sa'ada	2,030	3,000	1,100	3,150	9,280
Sana'a	1,575	2,200	1,200	3,977	8,952
Socotra	1,523	2,400	1,220	3,780	8,923
Taizz	1,601	2,386	1,100	6,300	11,388

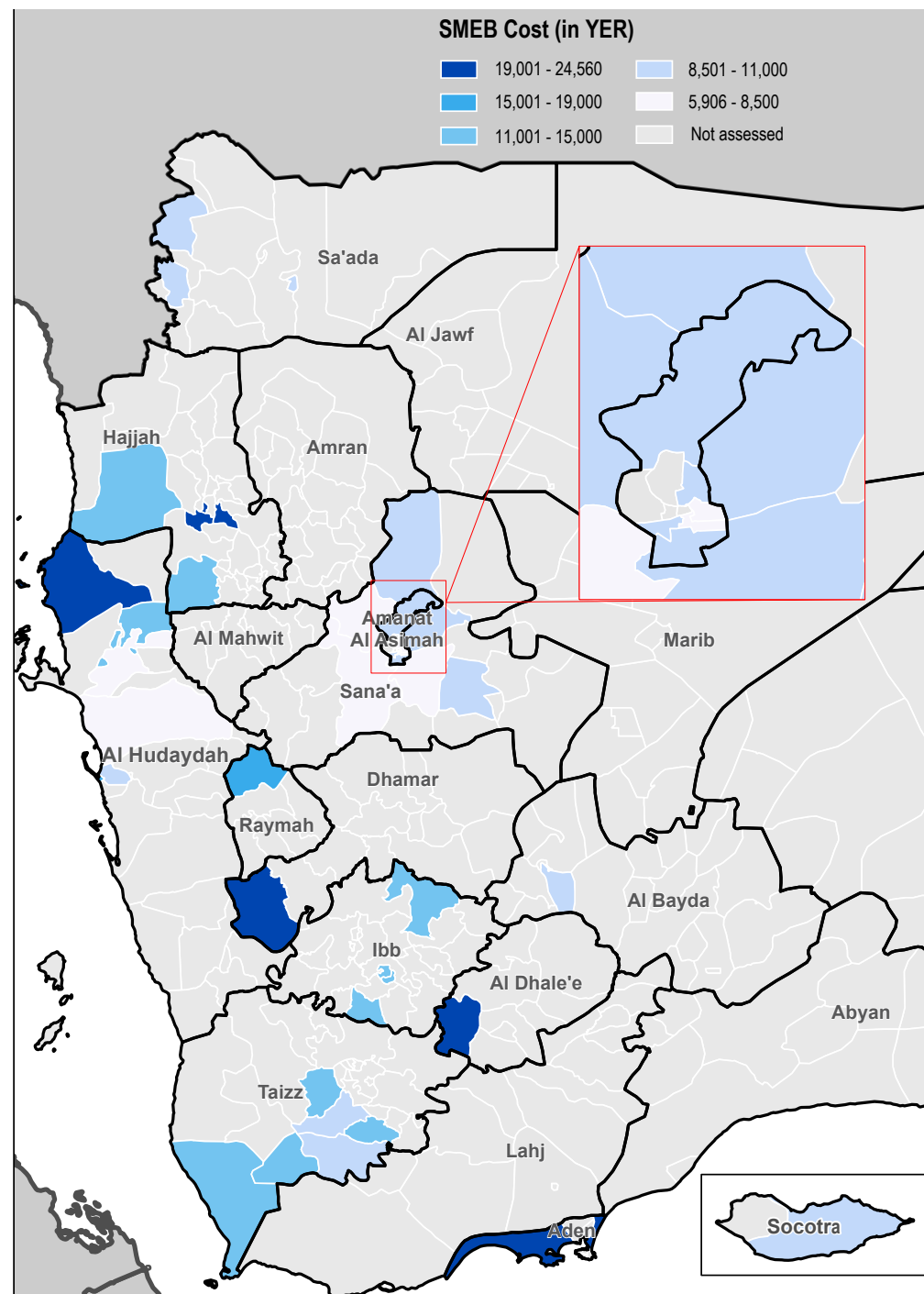
* Water trucking prices are volatile and are an important variations of WASH SMEB cost from one governorate to another. Only governorates with a complete SMEB are included in this table.

Note: Red indicates the highest median price; green the lowest; and NA when data is not available.

MEDIAN WASH SMEB PRICES, BY MONTH AND GOVERNORATE*



* Price variations of WASH SMEB costs are calculated using data from markets from one month to another.



Note: only complete SMEB are taken into account.

SUPPLY OVERVIEW FOR YEMEN

AVERAGE REPORTED RESTOCKING TIME (DAYS)

Governorate	Petrol	Diesel	Bottled water	Treated water	Soap	Laundry powder	Sanitary napkins
Aden	22	30	2	1	1	1	1
Al Bayda	14	16	5	2	8	6	18
Al Dhale'e	2	2	1	NA	1	1	1
Al Hudaydah	10	7	2	2	5	4	10
Amanat Al Asimah	11	12	2	2	17	17	18
Dhamar	3	3	2	2	2	2	2
Hajjah	5	5	3	3	3	3	3
Ibb	10	8	6	5	8	7	10
Lahj	5	1	2	2	3	2	3
Raymah	2	5	1	1	1	1	1
Sa'ada	NA	NA	4	1	4	4	5
Sana'a	19	18	3	2	4	3	4
Socotra	4	4	2	NA	2	3	3
Taizz	2	2	3	2	8	5	5

OVERVIEW FOR WATER TRUCKING

73% of water trucking vendor KIs stated that they charged delivery costs based upon the distance between the water source and delivery point. The additional price for 10km is 8,000 YER, for 20 km 10,250 YER and for 30 km 15,000 YER.

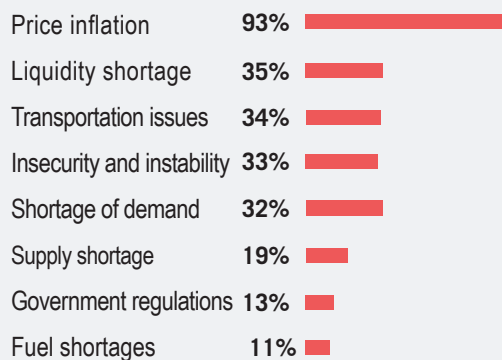
61% of water trucking vendor KIs stated that they sell non-chlorinated water.

33% of water trucking vendor KIs stated that they sell chlorinated water. An additional 6% reported being unaware if the water they sold was chlorinated

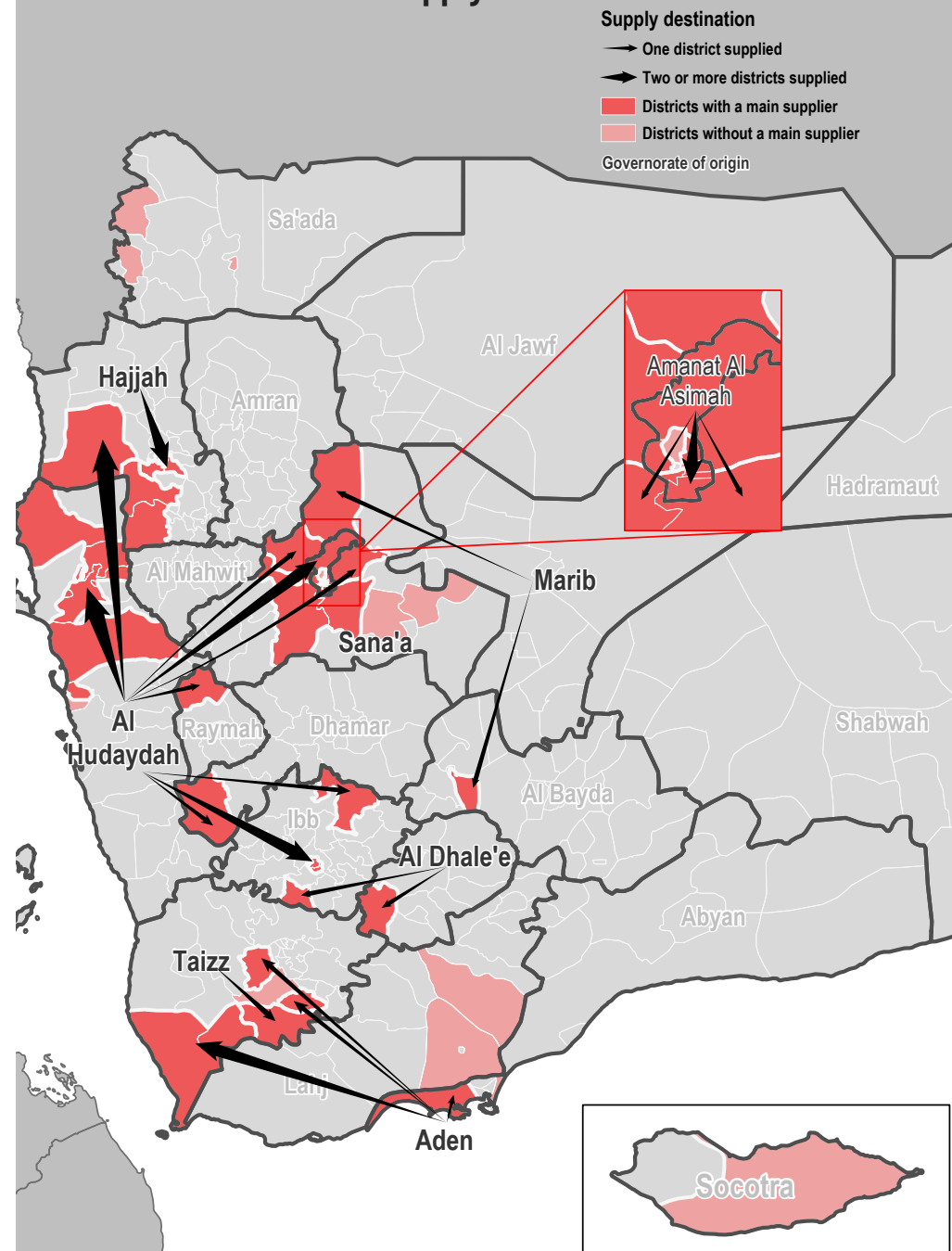
86% of water vendor KIs reported sourcing water from a pumping station or a borehole, 6% reported sourcing it from treatment station and 3% from water spring.

CONSTRAINTS AND CHALLENGES

Vendor KIs reported that price inflation, liquidity shortage and transportation issues as their three main constraints.



Petrol and Diesel main supply chains in assessed districts



Note: this map also includes intra-governorate supply chains

APPENDIX

WHAT IS THE INTERSECTOR CASH AND MARKET WORKING GROUP?

With the emergence of the conflict in 2014, humanitarian actors in Yemen began using cash and vouchers as a response tool to meet the immediate needs of the Yemeni population. The CMWG was established to provide a platform for discussion and setting standards/recommendations on cash and market-based responses (inclusive of cash and vouchers) for the cash actors in Yemen. The JMMI was developed by the CMWG, the WASH Cluster, and REACH in order to harmonize price monitoring among amongst WASH actors in Yemen.

ADDITIONAL INFORMATION ON METHODOLOGY

To be assessed by the JMMI, markets must be either a single permanent market, or a local community where multiple commercial areas are located in close proximity to one another. When possible, markets/shops are selected within a single geographical location, where there is at least one wholesaler operating in the market, or multiple areas of commerce within the same geographical location when it is too small, to provide a minimum of three price quotations per assessed items.

Participating organisations train their enumerators on the JMMI methodology and data collection tools using standard training materials developed by REACH. Each month, enumerators conduct KI interviews with market vendors to collect three price quotations for each item from a minimum of two markets per district, from which a median price is calculated.

In addition to price levels, vendors are asked about the location of their supplier, the number of days it takes to restock the items, and the constraints they

are facing in purchasing and selling the items in question. Additional questions are included for water trucking, to gauge the impact of delivery distance upon price level.

Following data collection, REACH compiles and cleans all partner data, normalising prices and cross-checking outliers. The cleaned data is then analysed by commodity and by governorate. To illustrate local variations in prices and availability, REACH uses the collected data to map the price of each type of item in each district. REACH also calculates the WASH SMEB (Survival Minimum Expenditure Baskets), which is composed of four items: soap (1.05 kg), laundry powder (2 kg), sanitary napkins (20 units) and water trucking (3.15 m3). The cleaned data sets are available on the [REACH Resource Centre](#) and are distributed to all participating partners, as well as to relevant clusters and the broader humanitarian community.

LIMITATIONS

Due to issues of access and security issues across Yemen, the districts included in the JMMI vary on a monthly basis, and as such there are sometimes a limited number of districts for which trends can be assessed over time. Governorate level data is aggregated from the respective districts assessed in a given month, and so the findings are not representative of individual markets. Finally, the market monitoring process has been coordinated remotely by REACH, which inherently presents some challenges in terms of coordination and follow-up with the partners. Participating organisations are therefore requested to adopt harmonised data collection methodologies and tools to ensure that the data uploaded is as accurate as possible.

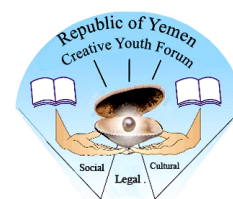
CALCULATION OF LOWEST MEDIAN PRICE

The aggregated median price table is calculated by taking the median of the prices collected are the minimum prices in the market. The reported prices for each district are calculated from the average of the minimum reported prices of the constituent markets assessed. Additionally, national average median prices and percentage change from one month to another are calculated only on data from markets that were assessed in both consecutive months.

ENDNOTES

¹ *Official rate:* retrieved from www.xe.com (30 September 2018). *Parallel market rate:* exchange rates are now collected at district level by REACH partner organisations during data collection.

PARTICIPATING PARTNERS INCLUDE



مؤسسة المدينة القديمة للتنمية
Old City Foundation for Development



ABOUT REACH

REACH is a joint initiative that facilitates the development of information tools and products that enhance the capacity of aid actors to make evidence-based decisions in emergency, recovery and development contexts. By doing so, REACH contributes to ensuring that communities affected by emergencies receive the support they need. All REACH activities are conducted in support to and within the framework of inter-agency aid coordination mechanisms. For more information, please visit our website at www.reach-initiative.org, contact us directly at yemen@reach-initiative.org or follow us on Twitter at [@REACH_info](https://twitter.com/REACH_info).

