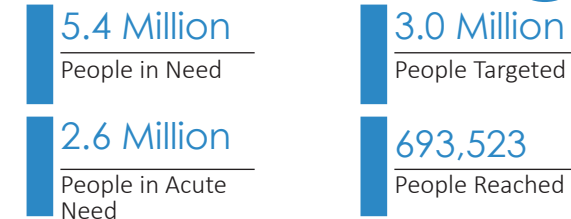
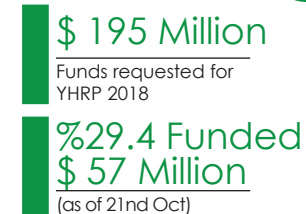


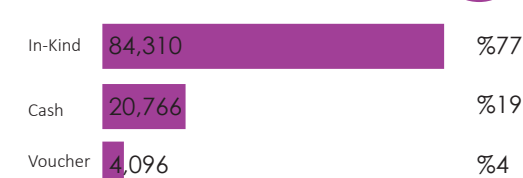
### POPULATION FIGURES



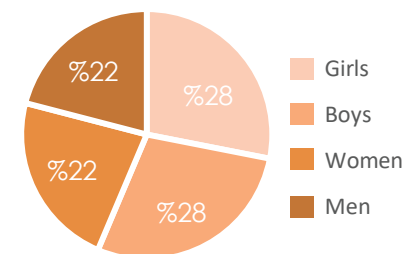
### FUNDING



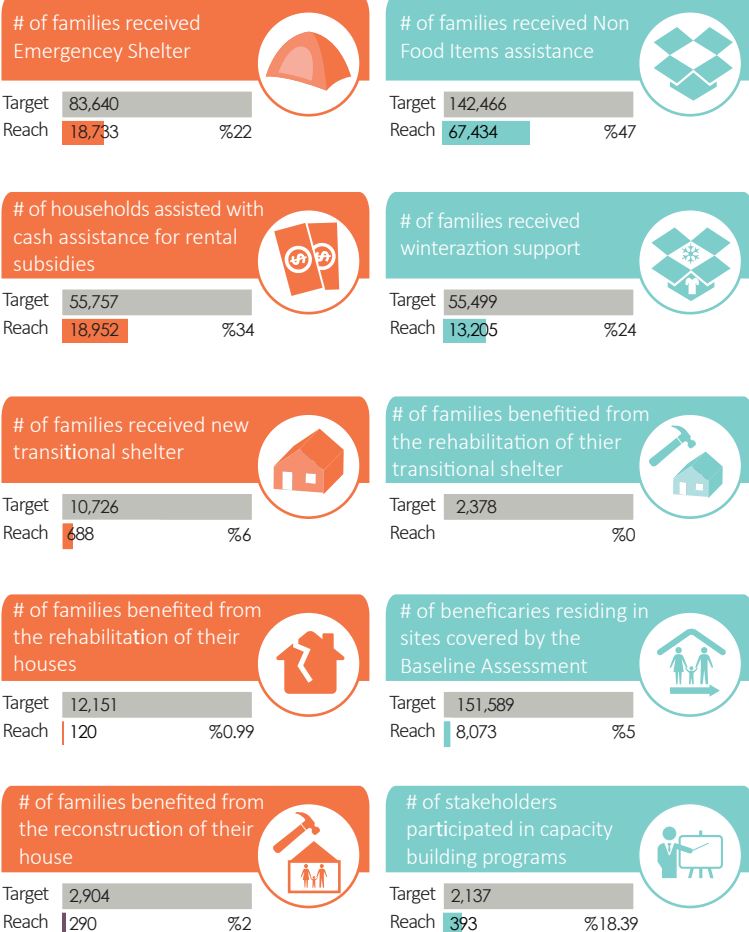
### ASSISTANCE vs MODALITY



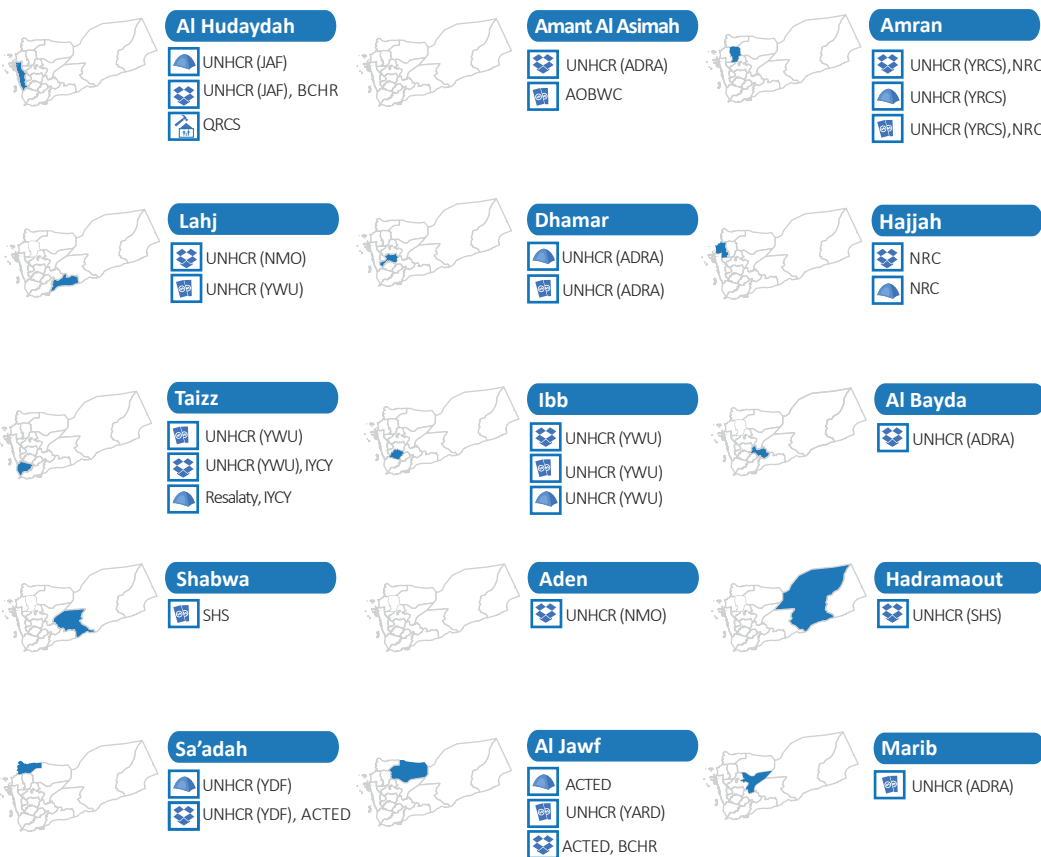
### Age/Gender Breakdowns



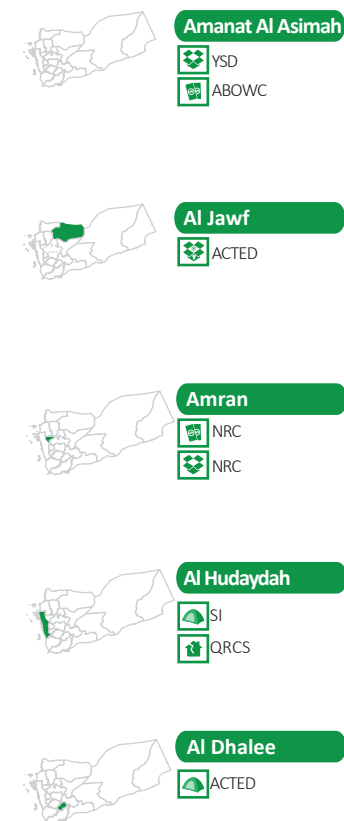
### Households Assisted Jan - Sep 2018



### Implemented Activities in September



### Planned Activities in October




**18 partners**  
 implemented activities in September 2018 only


**7 partners**  
 will implement activities in October 2018