

Yemen Shelter / NFI / CCCM Cluster Winterization Strategy October 2018 – February 2019

i. Background

The climate in Yemen varies greatly depending on the geographical region. During the winter season, the country experiences coolness, with frequent frost. The range of temperature can go from 22°C (72°F) during the highest temperature in winter, into below 0°C (32.0 °F) at its coldest. Rain is brought in by the southwest winds. Rainfall, which comes in irregular heavy torrents, averages 130 millimetres (5.12 in) annually.

This document represents the Winterization Strategy for IDPs and affected populations. It is part of the Shelter/NFI/CCCM Cluster efforts to put in place measures to support people of concern in order to avert the risk of humanitarian tragedy and loss of life during the winter months, particularly between October and February. The Shelter/NFI/CCCM Cluster's response requires coordinated efforts by partners and timely implementation to address this situation by distributing Winter NFIs and Shelter assistance.

Given the current numbers of displaced persons concerned and the growing humanitarian needs, more effort will be required to bolster the response in the affected areas during the winter months. The cluster will seek to provide people most at risk, particularly women and children, with mostly the cash equivalent of the "winter package" composed of different items as outlined in this document. *Special attention are envisaged for individuals with specific needs.*

ii. Priority Locations

The priority locations determined based on the criteria indicated below and the first level of prioritisation are in locations that have very low temperatures during the winter months.

First level of prioritisation:

- Temperature of the location during the winter months with the following categories:
 - Critical: Districts where minimal noted temperature for period December-February are between 1.5 and 5 degrees Celsius and mean lowest noted temperature in districts is below 15 degrees.
 - High: Districts where minimal noted temperature for period December-February are between 5.1 and 10 degrees Celsius and mean lowest noted temperature in districts is below 19 degrees.
 - Medium: Districts where minimal noted temperature for period December-February are between 10.1 and 17 degrees Celsius and mean lowest noted temperature in districts is below 21 degrees.
 - Low or none: Districts where minimal noted temperature for period December-February are above 17 degrees Celsius and mean lowest noted temperature in districts are above 15 degrees.

Second level of prioritisation:

- Locations with high numbers of people with special needs (PWSN).
- Locations with high and medium needs severity.

The Cluster has prepared a heat map (Annex I).

iii. Target Beneficiaries

The primary objective of the winterisation strategy is to target IDPs and returnees living in IDP hosting Sites and host communities and are living in sub-standard shelter conditions that put them at grave risk of further deterioration in their shelter vulnerability due to the extreme temperatures.

The aim would be to achieve the following:

- Reduction of the shelter vulnerability to winter conditions
- Provide vulnerable families without shelter with a basic emergency shelter and winterisation support to protect and preserve life
- Reduce health and safety risks for already vulnerable families that become elevated during this period
- Through cash assistance give families the choice to prioritise their winter needs

The following beneficiary selection criteria in addition to the Shelter/NFI/CCCM vulnerability criteria should be considered

- IDPs living in IDPs Hosting Sites that will not withstand the winter without some weatherproofing support
- IDPs living in IDP Hosting Sites or host communities that are living in sub-standard shelters that need weatherproofing
- IDPs that are economically poor without the means to provide for their winterisation needs and without assistance their health and wellbeing would deteriorate significantly

iv. Planning assumptions

Between October 2018 and February 2019, the Shelter/NFI/CCCM Cluster anticipates 75,683 vulnerable families in need of urgent assistance that planned to be targeted in-line with 2018 HRP (Humanitarian Response Plan)/Fast Track.

The priority governorates and districts are listed in Annex II below and these were developed based on a combination of the criteria provided in Section ii above during 2018 HRP process, the harsh weather conditions (extremely cold) during the winter season, areas with a high number of people with specific needs and areas with high and medium needs severity. The below table I summarizes the governorates and families that will be targeted (in one or more districts) in critical priority locations.

Governorate	Families in need for Winter NFIs Support	Families in need for Winter Shelter Support	Total Families
Abyan	2,336	509	2,845
Al Bayda	826	156	982
Al Dhale'e	4,225	957	5,182
Al Jawf	2836	2,671	5,507
Al Maharah	690	173	863
Al Mahwit	0	200	200
Amanat Al Asimah	13,249	3,213	16,462
Amran	3,239	2,755	5,994
Dhamar	1,000	0	1,000
Hadramaut	888	89	977
Hajjah	8,282	2,572	10,854
Ibb	0	800	800
Lahj	4,051	862	4,913
Marib	1,515	578	2,093
Sa'ada	6,364	1,353	7,717
Sana'a	4,558	811	5,369
Shabwah	1940	485	2,425
Taizz	500	1,000	1,500
Grand Total	56,499	19,184	75,683

Table I : *The figures of the Governorates represent one or more districts that are affected with cold during the winter season, require assistance and considered as a critical priority location. Governorates/ Districts that are not affected by the winter and have persisting needs will be assisted through the regular Cluster Humanitarian programs that were planned under 2018 HRP/Fast Track.*

v. Winterization Support

The cluster winterization strategy focuses on the following areas of intervention in order to avert the risk of humanitarian catastrophe and loss of life:

Type of assistance	Description of the assistance	Unit Cost (USD) per family	Targeted group
Winter In-kind Support	<u>Blankets (per person):</u> one high thermal single blanket or two medium thermal single blankets or one double blanket.	\$60	IDPs and host community
	<u>Clothes (per person):</u> Male: Fleece pyjama, jacket, socks and shawl. Female: Fleece pyjama, socks, sweater and scarf. Children: Fleece pyjama, hat, sweater, gloves and socks. Infant (under 2 years): Fleece infant blanket, hat, pyjama and socks. Infant (over 2 years): Fleece infant blanket, hat, pyjama and socks.	\$80	IDPs and host community
	Heating Grant	\$60	IDPs in Hosting Sites
	Provision of two plastic sheeting per family (It shall be used to reinforce the existing makeshift shelter if needed) or provide partitions	\$30	IDPs in Hosting Sites
	Winter Cash Grant*	Winter NFIs Grant equivalent kit support of the above assistance	\$230
	Shelter Grant for basic minor rehabilitation of damaged or sub-standard houses to ensure that at least one room is sealed and can accommodate families during winter season	\$230	IDPs, host community and Returnees

* The beneficiaries are to be provided with one type of assistance.

vi. Financial requirements

A total of USD **\$20,984,671** is requested for activities planned to be implemented in the affected areas during the winter season. This plan was budgeted under 2018 HRP/Fast Track.

Type of assistance	Modality	HHs targeted for assistance	Basic Unit Cost (US\$)*	Basic Unit Cost + Operation Cost (US\$)**	Total Cost (US\$)
Winter Support	Cash/Voucher	48,369	\$230	\$265	\$12,817,785
	In-Kind	27,314	\$230	\$299	\$8,166,886
	Grand Total	75,683			\$20,984,671

* This is reflect the amount that should be transferred to the beneficiaries for the cash/voucher modality or the procurement cost in the case of in-kind distributions.

** This included the basic unit cost and the average rate for the operation cost. 15% added for operational costs in the top of the basic unit cost in the case for the cash/voucher modality (i.e. staffing, transfer fees, etc.) and 30% for the in-kind modality (i.e. staffing, warehousing, distribution, etc.).

vii. Modality of distribution

As indicated in the Shelter/NFI/CCCM Cluster *Distribution Guidelines*, the distribution of cash or in kind commodities needs to follow certain minimum guidelines to ensure the safety of the Partner and the beneficiaries.

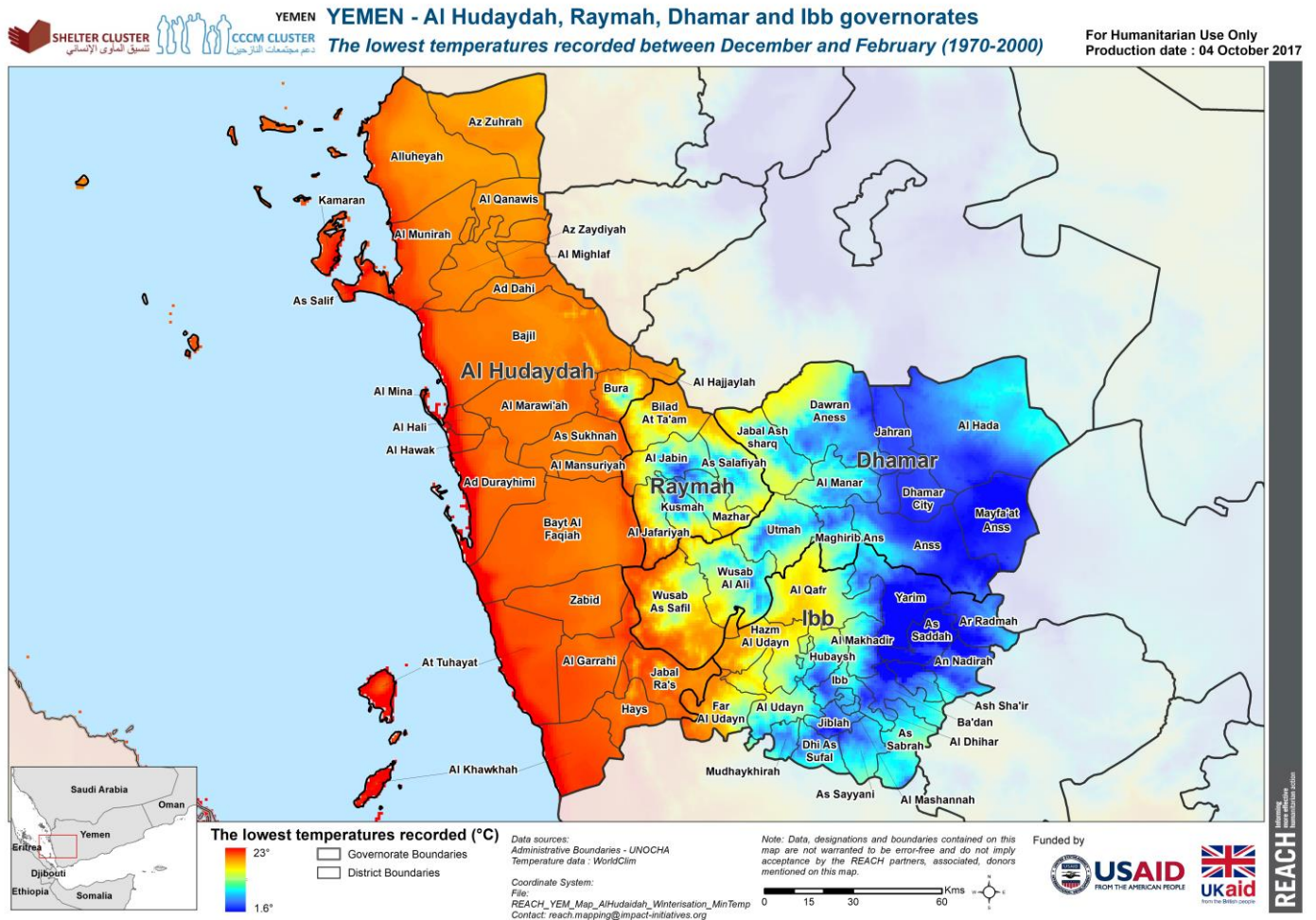
- Partners shall define the feasibility of implementing the abovementioned activities through cash or voucher or in-kind taking into account various factors in the targeted areas (i.e. availability of stocks in the local market, functionality of cash systems).

- Engagement with the relevant stakeholders including (Beneficiaries, communities, relevant Clusters, NGOs working in the location, local authorities, etc.) *Refer to responsibilities of stakeholders in guidelines.*
- Assessment and verification of the target population is essential to verify the populations that are in need of the winter assistance. The assessment should also verify locations that can be provided with cash/voucher assistance and those that have to be provided with in kind assistance.
- Ensure security and access to the locations for both Partners and the beneficiaries that can be sustained.
- Ensure that a complaints mechanism is established and well publicised before the start of the distribution so that beneficiaries are aware of how their grievances would be addressed.
- Post distribution monitoring including qualitative and quantitative information including information on whether the project achieved its outcomes of making the target beneficiaries less vulnerable to the winter and qualitative information on the satisfaction of the beneficiaries and the use of the cash or in kind input.

viii. General Note

- Reference shall be made to the Health Cluster on the provision of mosquito nets during the winter season in hot areas, which are vulnerable to malaria and / or other diseases.
- Partners could support the strategy through the conduct of assessment and distribution of cash or in kind assistance or through conducting assessments that could be targeted by other Partners.

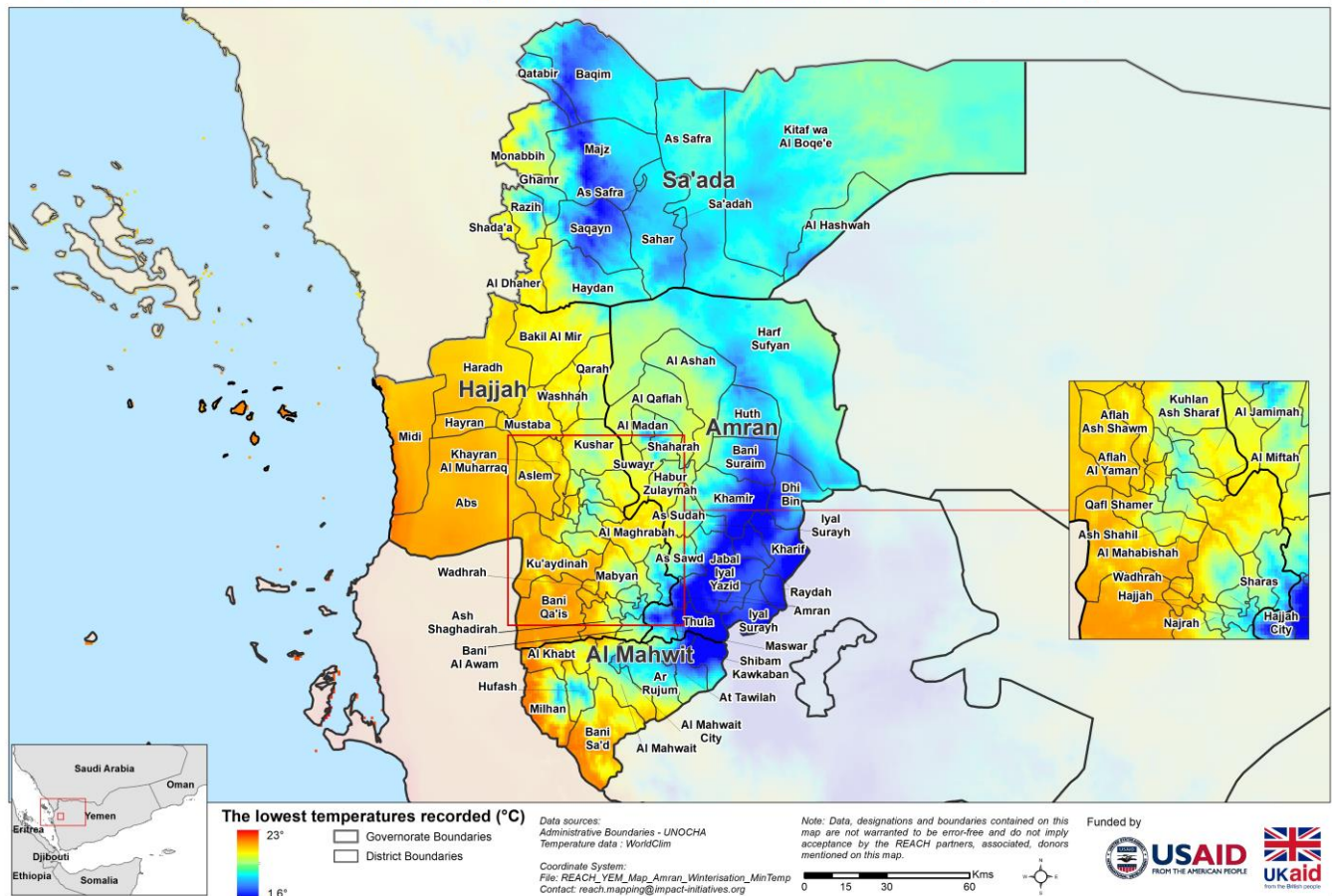
Annex I: Maps of the weather temperatures during the winter season¹



¹ The maps were developed with support from REACH

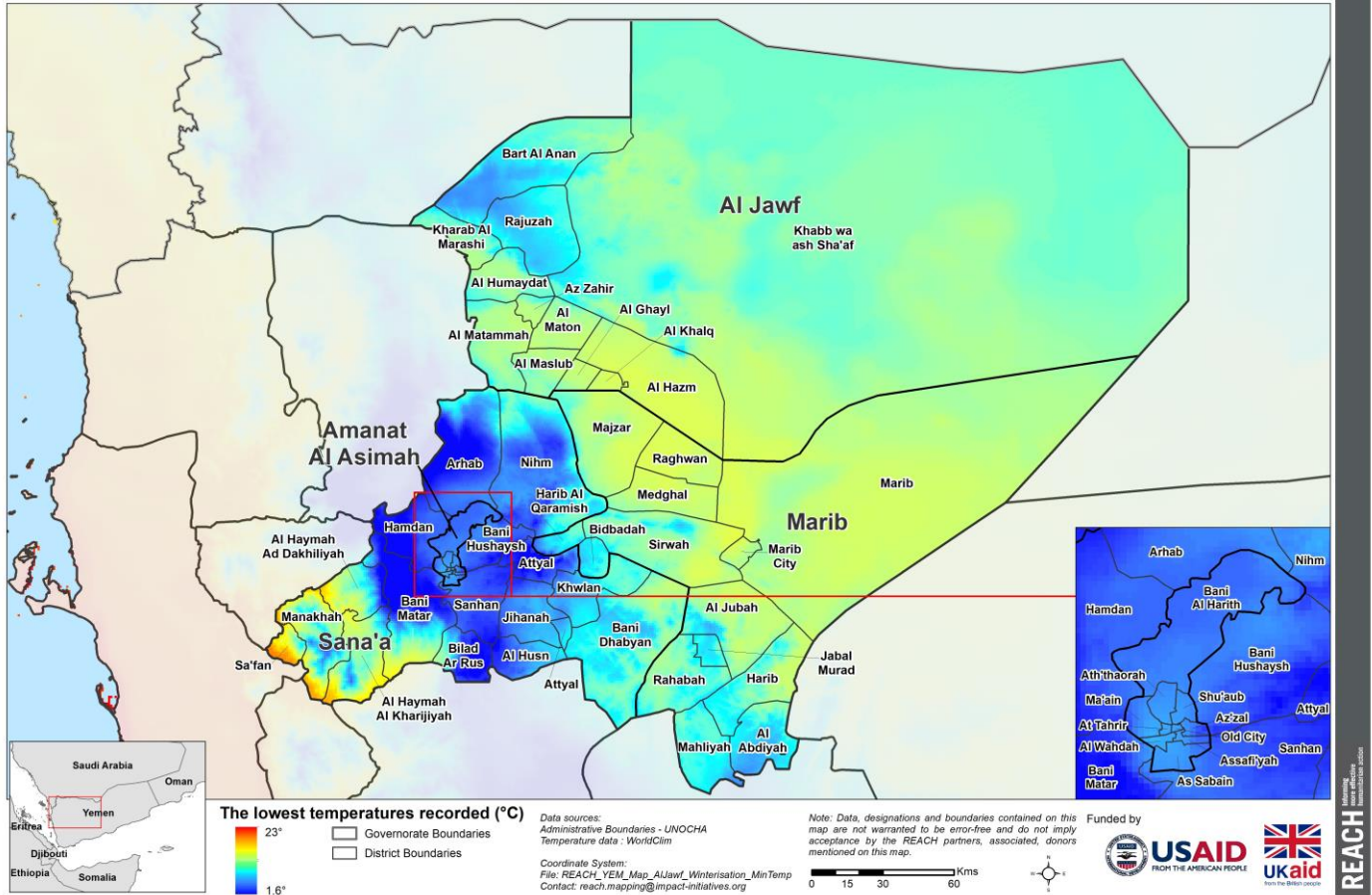

YEMEN - Amran, Al Mahwit, Hajjah and Sa'ada governorates
The lowest temperatures recorded between December and February (1970-2000)

For Humanitarian Use Only
Production date : 04 October 2017



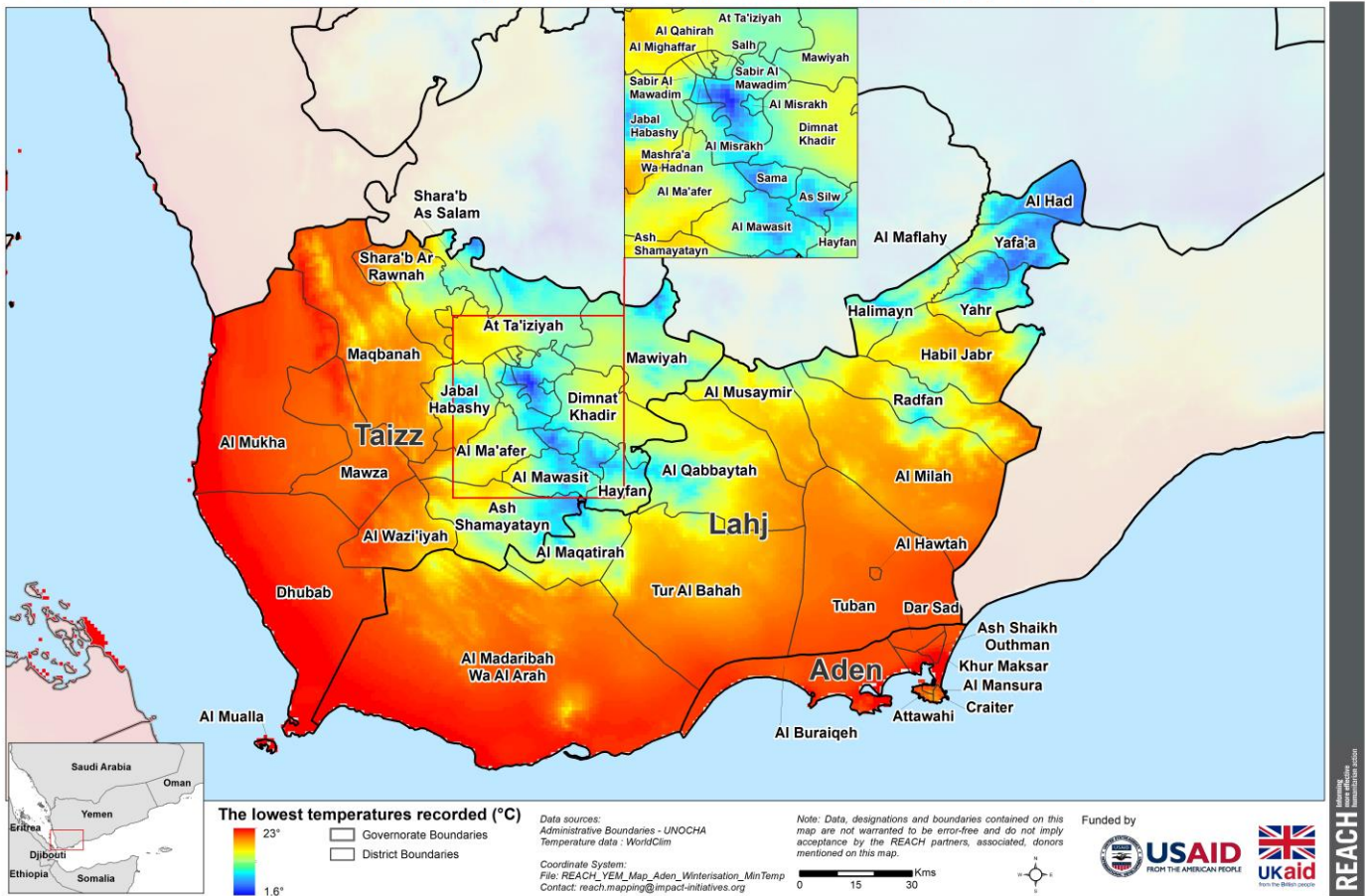

YEMEN - AI Jawf, Amanat AI Asimah, Marib and Sana'a governorates
The lowest temperatures recorded between December and February (1970-2000)

For Humanitarian Use Only
Production date : 04 October 2017



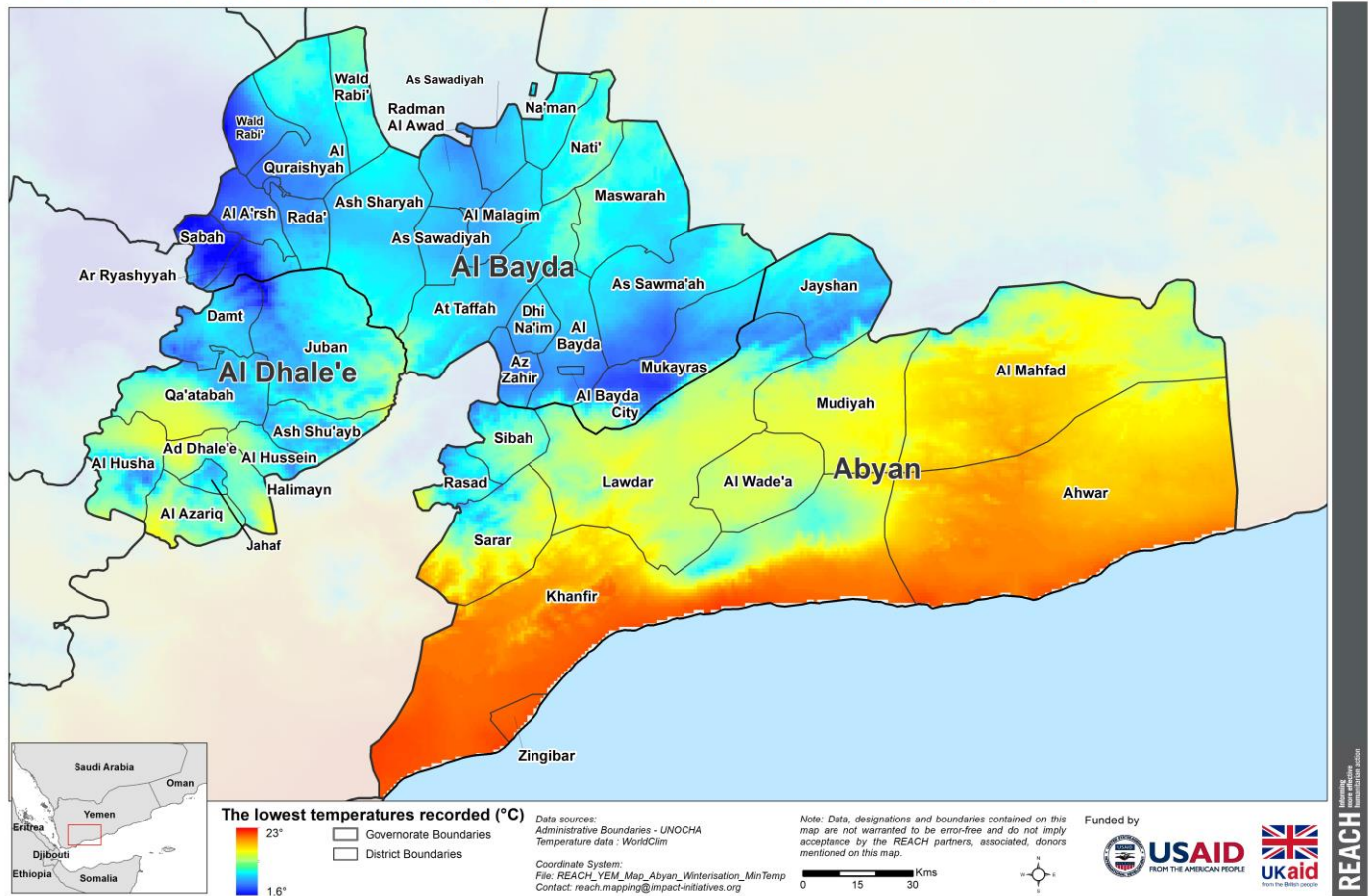

SHELTER CLUSTER تنسيق المأوى الإنساني

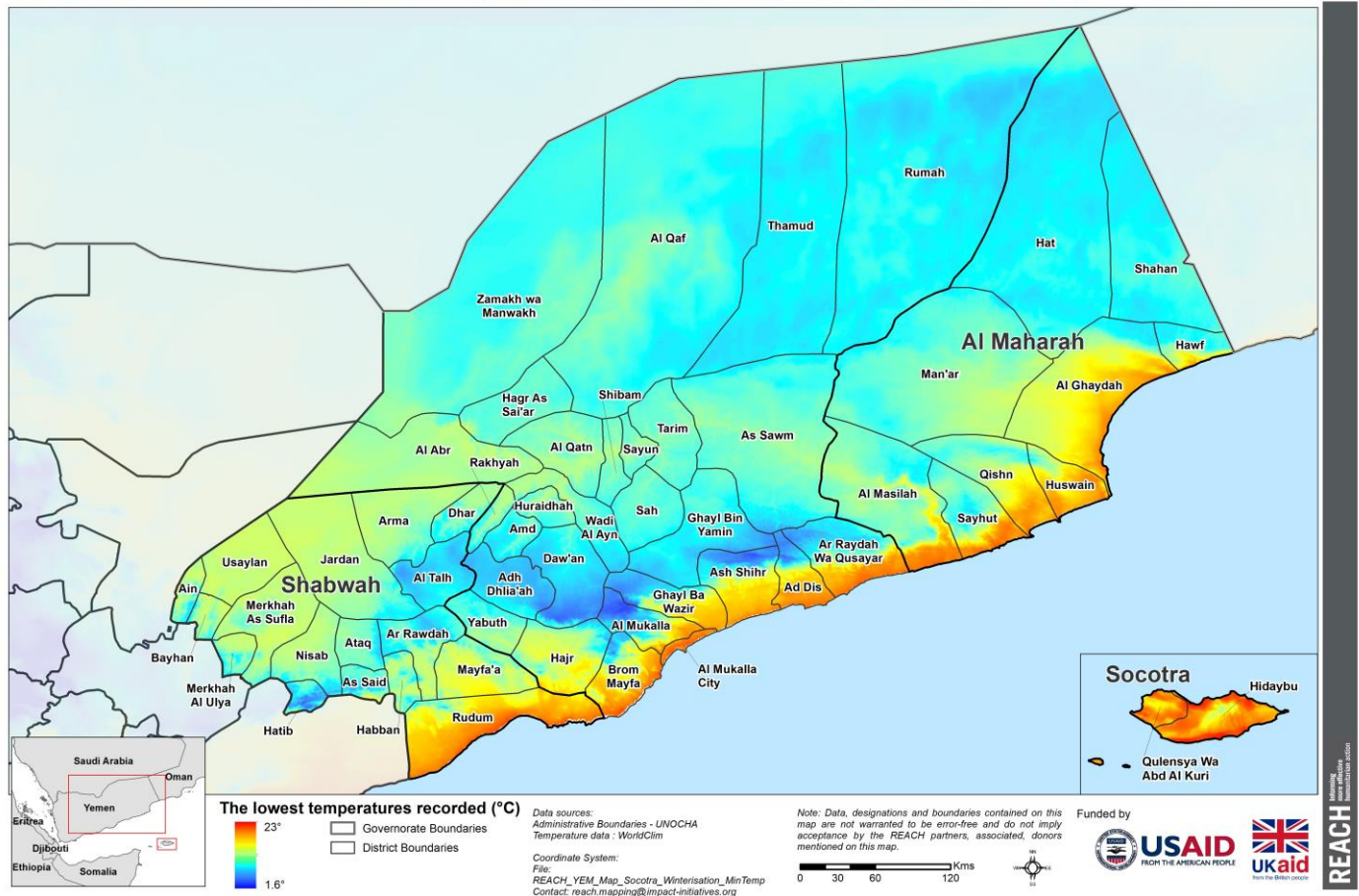
CCCM CLUSTER دعم مجتمعات النازحين
YEMEN
YEMEN - Aden, Lahj and Taizz governorates
The lowest temperatures recorded between December and February (1970-2000)
For Humanitarian Use Only
Production date : 04 October 2017




YEMEN - Abyan, Al Bayda and Al Dhale'e governorates
The lowest temperatures recorded between December and February (1970-2000)

For Humanitarian Use Only
Production date : 04 October 2017





Annex II: Table below shows the total people targeted for Winter NFIs and Shelter support based on the prioritization indicators mentioned in section ii scored and weighted. The locations captured in the below table reflected the locations with critical priority.

Governorate / District	Families targeted for Winter NFIs Support	Families targeted for Winter Shelter Support	Total Families Targeted
Abyan	2336	509	2845
Khanfir	2036	509	2545
Lawdar	300	0	300
Al Bayda	826	156	982
Al Bayda City	826	156	982
Al Dhale'e	4225	957	5182
Ad Dhale'e	1738	435	2173
Al Hussein	828	207	1035
Damt	1459	315	1774
Qa'atabah	200	0	200
Al Jawf	2836	2671	5507
Al Ghayl	55	14	69
Al Hazm	565	641	1206
Al Khalq	265	66	331
Al Maslub	200	350	550
Al Maton	401	600	1001
Bart Al Anan	600	0	600
Khabb wa ash Sha'af	250	500	750
Kharab Al Marashi	100	0	100
Rajuzah	400	500	900
Al Maharah	690	173	863
Al Ghaydah	690	173	863
Al Mahwit	0	200	200
Bani Sa'd	0	200	200
Amanat Al Asimah	13249	3213	16462
Al Wahdah	100	0	100
As Sabain	8047	2012	10059
Ath'thaorah	100	0	100
Bani Al Harith	4902	1201	6103
Ma'ain	100	0	100
Amran	3239	2755	5994
Amran	1505	376	1881
Harf Sufyan	770	192	962
Huth	0	195	195
Iyal Surayh	964	241	1205
Khamir	0	1751	1751
Dhamar	1000	0	1000
Utmah	1000	0	1000
Hadramaut	888	89	977
Al Abr	533	0	533
Brom Mayfa	355	89	444
Hajjah	8282	2572	10854

Abs	3719	930	4649
Aslem	1379	345	1724
Bakil Al Mir	451	113	564
Hajjah City	0	500	500
Khayran Al Muharraq	1575	394	1969
Mustaba	1158	290	1448
Ibb	0	800	800
As Saddah	0	400	400
Yarim	0	400	400
Lahj	4051	862	4913
Al Maqatirah	300	0	300
Al Qabbaytah	2013	428	2441
Tuban	1738	434	2172
Marib	1515	578	2093
Harib Al Qaramish	149	37	186
Marib City	1001	450	1451
Medghal	194	48	242
Sirwah	171	43	214
Sa'ada	6364	1353	7717
Majz	1510	377	1887
Sa'adah	774	193	967
Sahar	3130	783	3913
Saqayn	950	0	950
Sana'a	4558	811	5369
Al Husn	556	139	695
Arhab	1514	378	1892
Attyal	842	186	1028
Bani Dhabyan	432	108	540
Hamdan	100	0	100
Nihm	1114	0	1114
Shabwah	1940	485	2425
As Said	661	165	826
Ataq	707	177	884
Usaylan	572	143	715
Taizz	500	1000	1500
Al Qahirah	0	500	500
At Ta'iziyah	125	0	125
Dimnat Khadir	125	0	125
Mawiyah	125	0	125
Salh	125	500	625
Grand Total	56,499	19,184	75,683