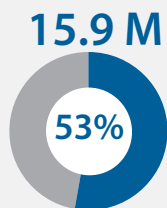
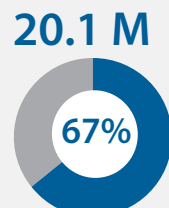


# YEMEN: Integrated Food Security Phase Classification Snapshot (December 2018 - January 2019)

## KEY FIGURES



People facing severe acute food insecurity in the presence of Humanitarian Food Assistance (HFA)  
December 2018 – January 2019



People facing severe acute food insecurity in the absence of Humanitarian Food Assistance (HFA)  
December 2018 – January 2019

## KEY DRIVERS



### Conflict & insecurity

Conflict continues to significantly impact food security at household level in Yemen



### High food prices

The prices of key commodities sugar, wheat and flour increased by over 20% in the second half of 2018\*\*



### Import disruptions

The decline in commercial imports continues to cut populations off from trade and assistance



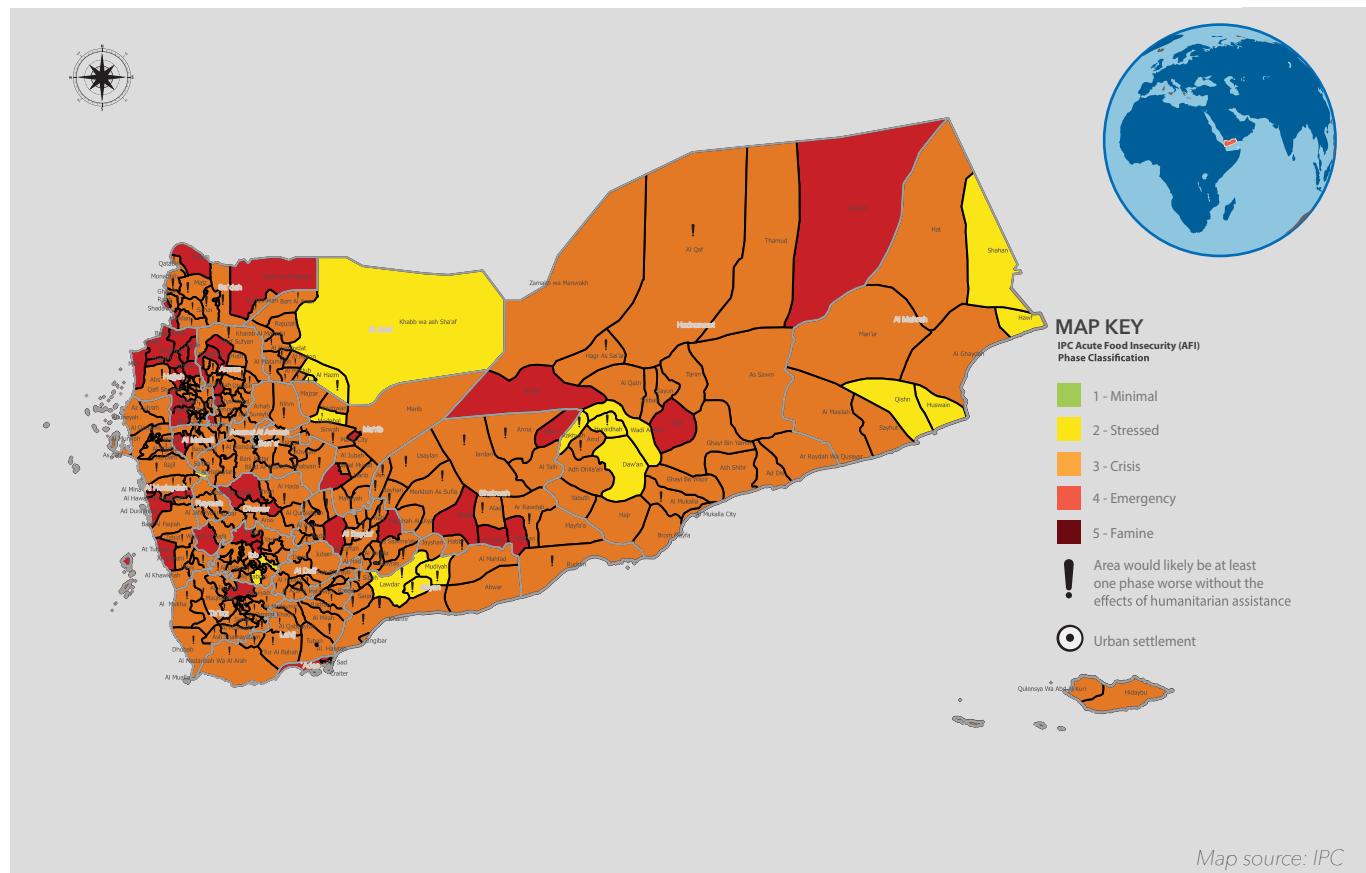
### Population displacement

Over 3.3 million people have been displaced due to an upsurge in violence\*\*\*

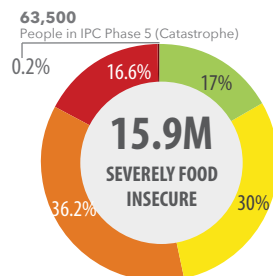
## OVERVIEW

According to the latest IPC analysis, from December 2018 to January 2019, while accounting for the current levels of Humanitarian Food Assistance (HFA), a total of 15.9 million people, i.e. 53% of the population analysed, is in need of urgent action. This includes 17% of the population (about 5 million people) classified in IPC Phase 4 (Emergency) and 36% (about 10.8 million people) in IPC Phase 3 (Crisis). Of greatest concern are the additional 63,500 people in IPC Phase 5 (Catastrophe).

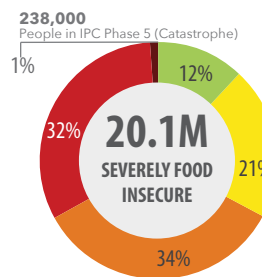
An additional analysis was conducted by the Yemen IPC Technical Working Group (TWG) to estimate the severity and magnitude of food insecurity excluding the mitigating effects of HFA delivered. This shows that, had HFA not been delivered, 20.1 million people or 67% of the total population would be in need of urgent action (IPC Phase 3 and above), including 238,000 people in IPC Phase 5 (Catastrophe).



**Phase Classification with HFA**  
(December 2018 - January 2019)



**Phase Classification without HFA**  
(December 2018 - January 2019)



**Comparison**  
(2017 - 2018)

