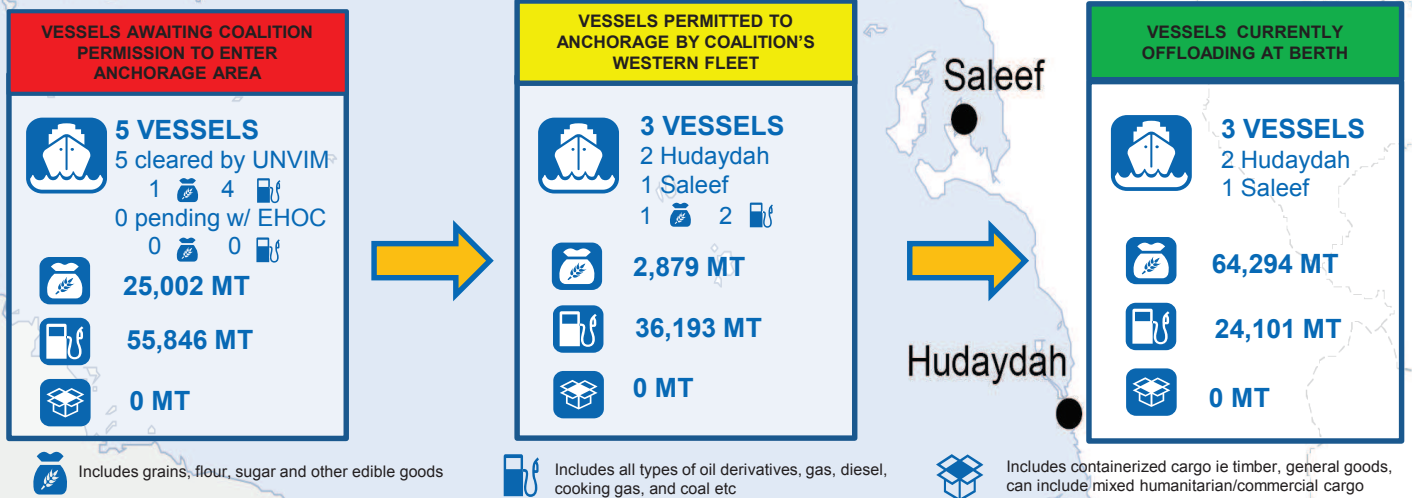


Yemen has historically been dependent on commercial imports of food, fuel and medicines. All ports must remain open to meet Yemen's import requirements. Hudaydah and Saleef are in geographic proximity to over 70 per cent of people in need of humanitarian assistance.

This tracker monitors commercial imports to Hudaydah and Saleef ports via the United Nations Verification and Inspection Mechanism (UNVIM) and prices of commodities. The map below illustrates the final stages vessels progress through before reaching the port of destination.



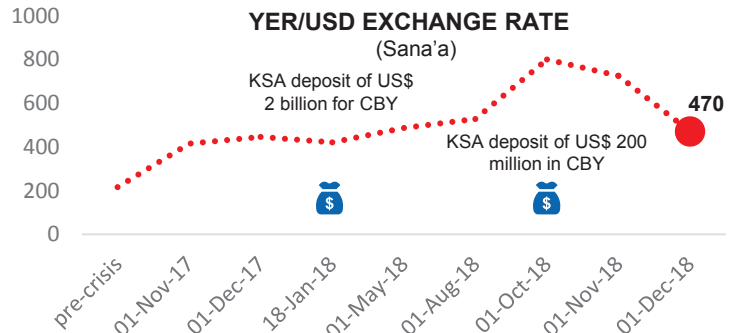
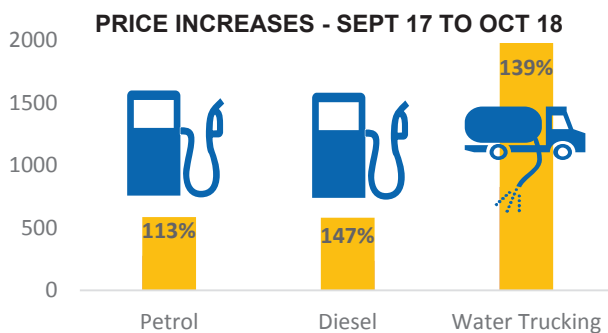
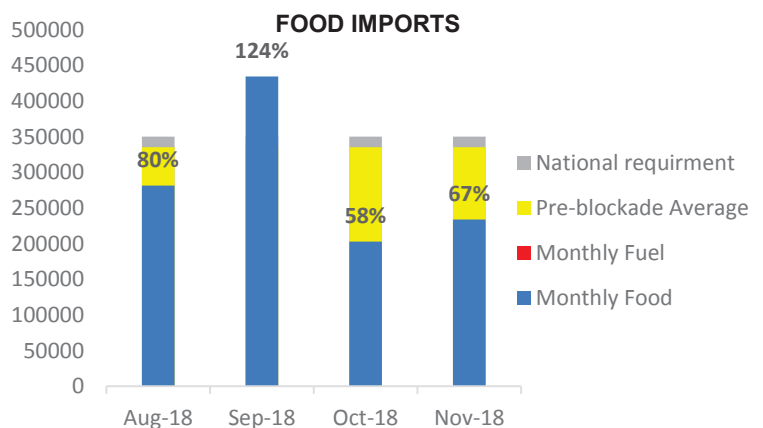
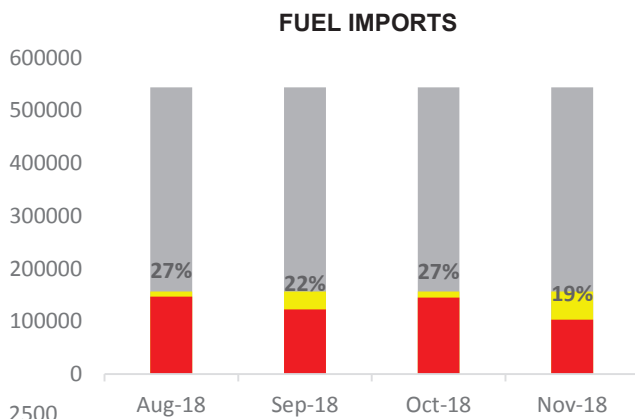
Impact of GoY Decree 75: As of 7 December six vessels carrying 71,517 metric tons of fuel are being denied permission by EHOCC, at the request of the GoY. This cargo is equivalent to 58 percent of the post blockade monthly average (Nov 17 to Nov 18). All six of these vessels have been inspected in Djibouti and issued UNVIM clearance certificates.

NOVEMBER UNVIM IMPORTS	14	233,714 MT	102,803 MT	0 MT
NR - MONTHLY NATIONAL REQUIREMENTS		350,000 MT	544,000 MT	CLEARANCE REQUEST AVERAGES
BB - PRE-BLOCKADE AVG July 2016 - Oct 2017		335,185 MT	156,235 MT	PRE-BLOCKADE 40
AB - POST-BLOCKADE AVG Nov 2017 - Nov 2018		269,981 MT	124,646 MT	POST-BLOCKADE 24
				DECLINE 38%

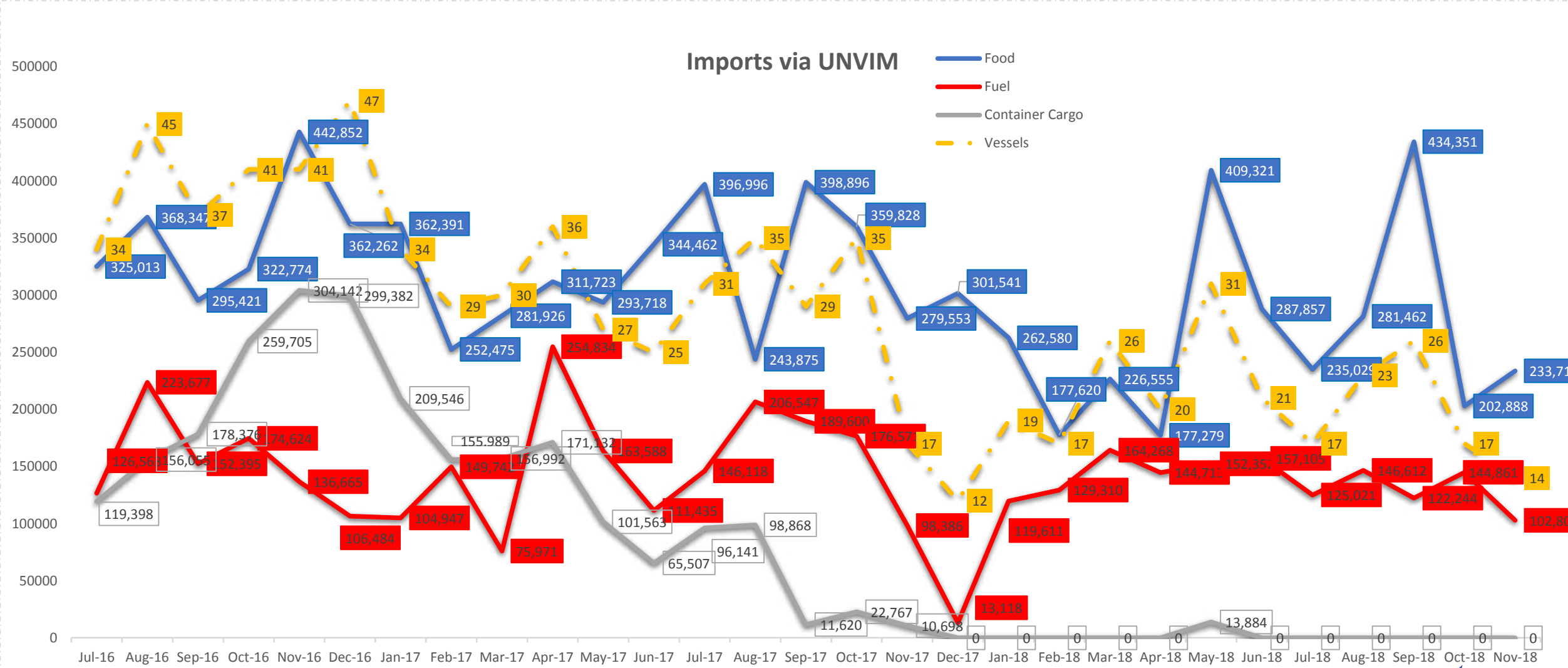
PERCENTAGE OF NATIONAL REQUIREMENTS PRE-BLOCKADE VS POST-BLOCKADE



PERCENTAGE OF NATIONAL NEEDS MET



Since the Nov. 2017 blockade food and fuel imports have declined and only one containerized shipped was permitted to offload at Hudaydah. Since Nov. 2017, food imports are meeting 77% of estimated national food requirements, on average each month and 19% below the pre-blockade average. Fuel imports are meeting less than one-quarter of estimated national fuel requirements, with no change to the average since Sept., but still 6% below the pre-blockade period. Since the blockade, on average 20 vessels are berthing and discharging at Hudaydah and Saleef, a 41% reduction from the pre-blockade the average of 35 vessels. There is a 38% decline in vessel clearance requests (24) compared to pre-blockade average of 40 vessels. In November 2018, food imports increased 9% while fuel imports declined 8% from October levels.



5 June GoY closes Ras Isa Port

6 Nov. Coalition closes all ports

20 Dec. Coalition opens ports for 30 days

21 Jan. Coalition opens ports for 30 days

16 April Coalition announces all air, land and sea ports are open

19 June Coalition forces reach Hudaydah airport

10 Oct. GoY implements Decree 75 on fuel imports