

INTRODUCTION

The Yemen Joint Market Monitoring Initiative (JMMI) was launched by REACH in collaboration with the Water, Sanitation and Hygiene (WASH) Cluster and the Cash and Market Working Group (CMWG) to support humanitarian actors with the objective of harmonizing price monitoring among all cash actors in Yemen. The JMMI incorporates information on market systems including price levels and supply chains. The basket of goods to be assessed comprises eight non-food items (NFIs), including fuel, water and hygiene products, reflecting the programmatic areas of the WASH Cluster.

METHODOLOGY

Data collection for the seventh round of the JMMI took place between the 21 - 31 October 2018. Enumerators from 13 partner organisations collected data in 58 districts across 16 governorates, through Key Informant (KI) interviews. The sample of vendors was selected by the organisations from markets of various sizes in both urban and rural areas. The data collected has been analysed in comparison with the price quotations recorded during the Multi-Agency Joint Cash Study conducted in September 2017, and the Weekly Price Monitoring Initiative (WPMI). Endorsed by the WASH Cluster, the WPMI was conducted during the economic blockade of Yemen in November 2017. Findings of this analysis, which are as indicative, are presented on a monthly basis through the publication of a factsheet and a supplementary dataset.

KEY FINDINGS

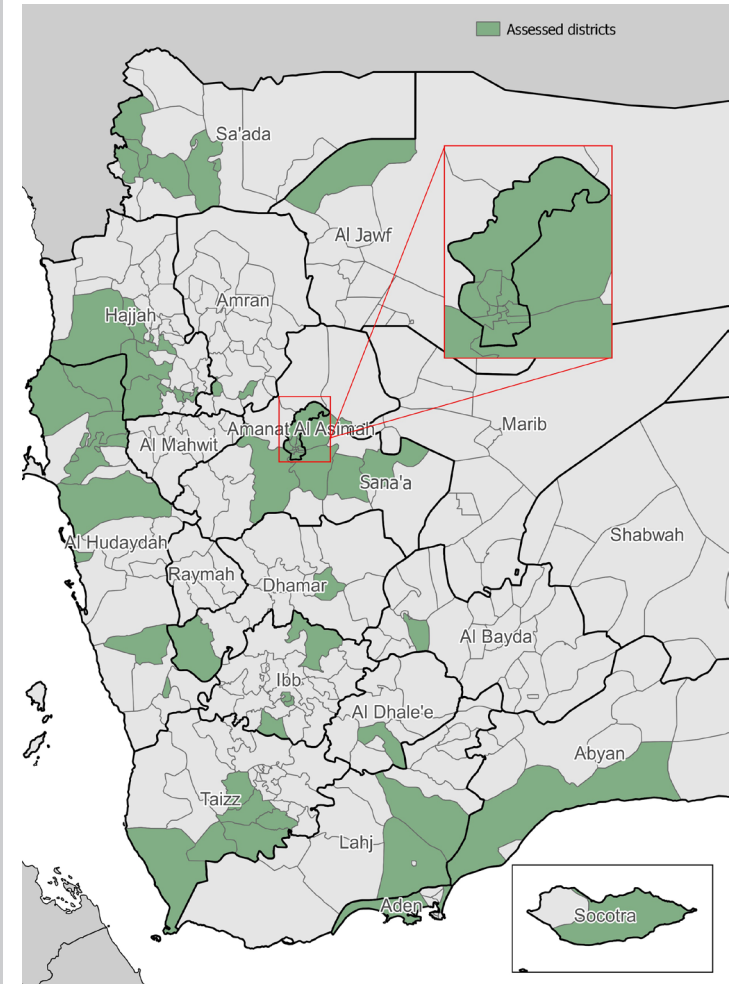
PRICE MONITORING OVERVIEW

- Between September and October, the value of the Yemeni Riyal (YER) continued to depreciate against the US Dollar (USD). At the time of data collection the exchange rate in the parallel market was 745 YER per USD, an increase of 9.5% when compared to September.
- Median price levels for most commodities increased between September and October. Laundry powder and water trucking prices had the greatest increase: 13.4% and 13.9% respectively.
- Median price levels for petrol and soap decreased between September and October by 12.2% and 14% respectively.
- The aggregated median WASH Survival Minimum Expenditure Basket (SMEB) Cost was 11,696 YER, with an increase of 9% compared to the cost observed in September.

SUPPLY OVERVIEW

- Fuel prices were higher in districts supplied by the governorate of al Hudaydah than in districts supplied by Aden. The highest fuel prices were largely found in the governorates of Taiz, Hajjah, and al Hudaydah.
- The median restocking time, reported at the time of data collection by fuel vendors, was 7 days compared to 5 days reported in September.
- Price inflation, transportation, and liquidity issues remained the challenges most frequently cited by vendor KIs. Shortages of fuel were also highlighted as a main challenge.

ASSESSED DISTRICTS



MONTHLY FIGURES

13 Participating partners
58 Districts assessed
343 Vendors surveyed

EXCHANGE RATES¹

1 US Dollar (USD) is equivalent to 250 Yemeni Riyal (YER) <i>Official</i>	1 US Dollar (USD) is equivalent to 745 Yemeni Riyal (YER) <i>Parallel market</i>
--	---

ASSESSED ITEMS

Petrol	Water trucking	Soap
Diesel	Treated water	Laundry powder
	Bottled water	Sanitary napkins

WASH SMEB

Soap	1.05 kg
Laundry powder	2 kg
Sanitary napkins	20 units
Water trucking	3.15 m ³

PRICE MONITORING OVERVIEW FOR YEMEN

MEDIAN PRICE LEVELS, PER ITEM, PER MONTH (IN YER)*

Item	September 2017 (baseline) [^]	November 2017 [^]	July 2018	August 2018	September 2018	October 2018	% Change (Sept-Oct)
Diesel	235	394	375	400	578	580	+0.4%
Petrol	275	349	375	415	656	585	-12.2%
Treated water	NA	175 ↯	100	123	140	155	+9.7%
Bottled water	70	100	100	115	140	150	+6.7%
Soap	88	NA	131	150	171	150	-14.%
Sanitary napkins	250	NA	400	450	563	600	+6.6%
Laundry powder	50	NA	93	100	117	135	+13.5%
Water trucking	825	1,700	1,350	1,200	1,700	1,975	+13.9%

* Price variations and the percentage change are calculated using data from markets that were assessed in both consecutive months.

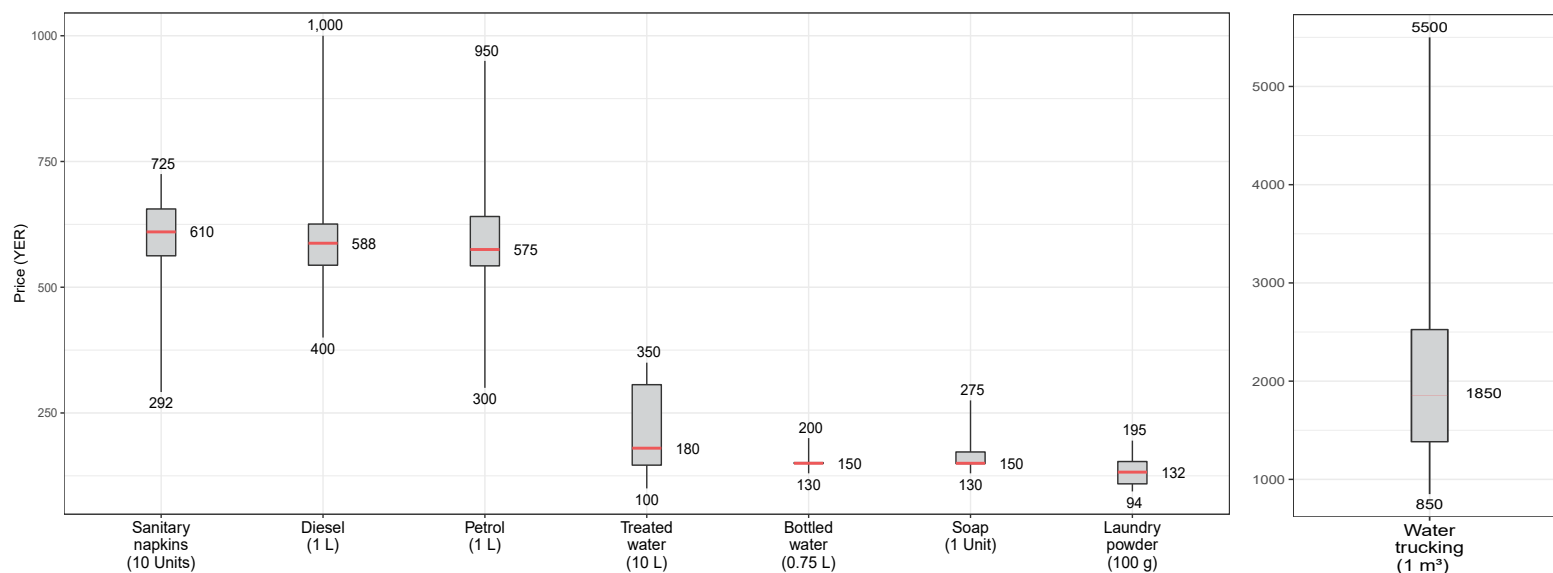
[^] Price levels for September 2017 are the price quotations recorded during the Multi-Agency Joint Cash Study, while prices for November 2017 were recorded during the Weekly Price Monitoring Initiative conducted by the WASH Cluster.

↯ Treated water prices for September and November 2017 were for 20L, while the JMMI collects prices for 10L.

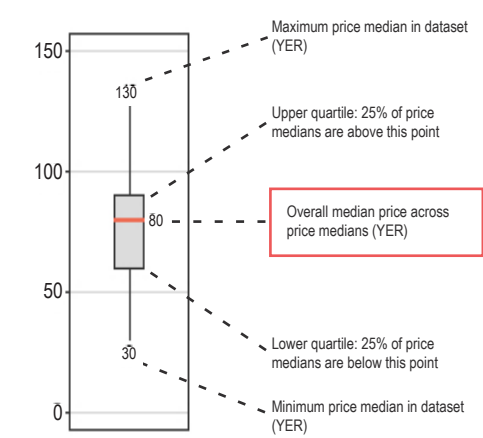
MEDIAN PRICE PER GOVERNORATE (IN YER)

Governorate	Petrol (1L)	Diesel (1L)	Bottled water (0.75L)	Treated water (10L)	Soap (1 Unit)	Laundry powder (100g)	Sanitary napkins (10)	Water trucking (1m ³)
Abyan	550	550	150	100	130	94	600	2,000
Aden	390	400	155	313	150	173	650	5,500
al Bayda	950	1,000	200	300	200	195	725	2,350
al Dhale'e	520	525	150	290	275	125	650	3,250
al Hudaydah	650	625	150	165	150	150	450	1,250
al Jawf	750	700	170	350	260	170	292	1,700
Amanat al Asimah	575	580	150	135	148	100	588	1,500
Amran	575	585	150	250	150	109	650	1,500
Dhmar	638	630	130	335	145	138	620	4,450
Hajjah	700	628	150	150	160	127	500	2,500
Ibb	575	580	150	100	150	109	525	2,300
Lahj	458	525	175	350	145	100	575	850
Sa'ada	590	590	150	180	180	160	600	1,400
Sana'a	575	600	145	143	170	125	675	1,333
Socotra	300	400	140	NA	150	140	700	1,200
Taizz	628	623	150	163	153	151	673	2,600

DISTRIBUTION OF PRICES ACROSS GOVERNORATES

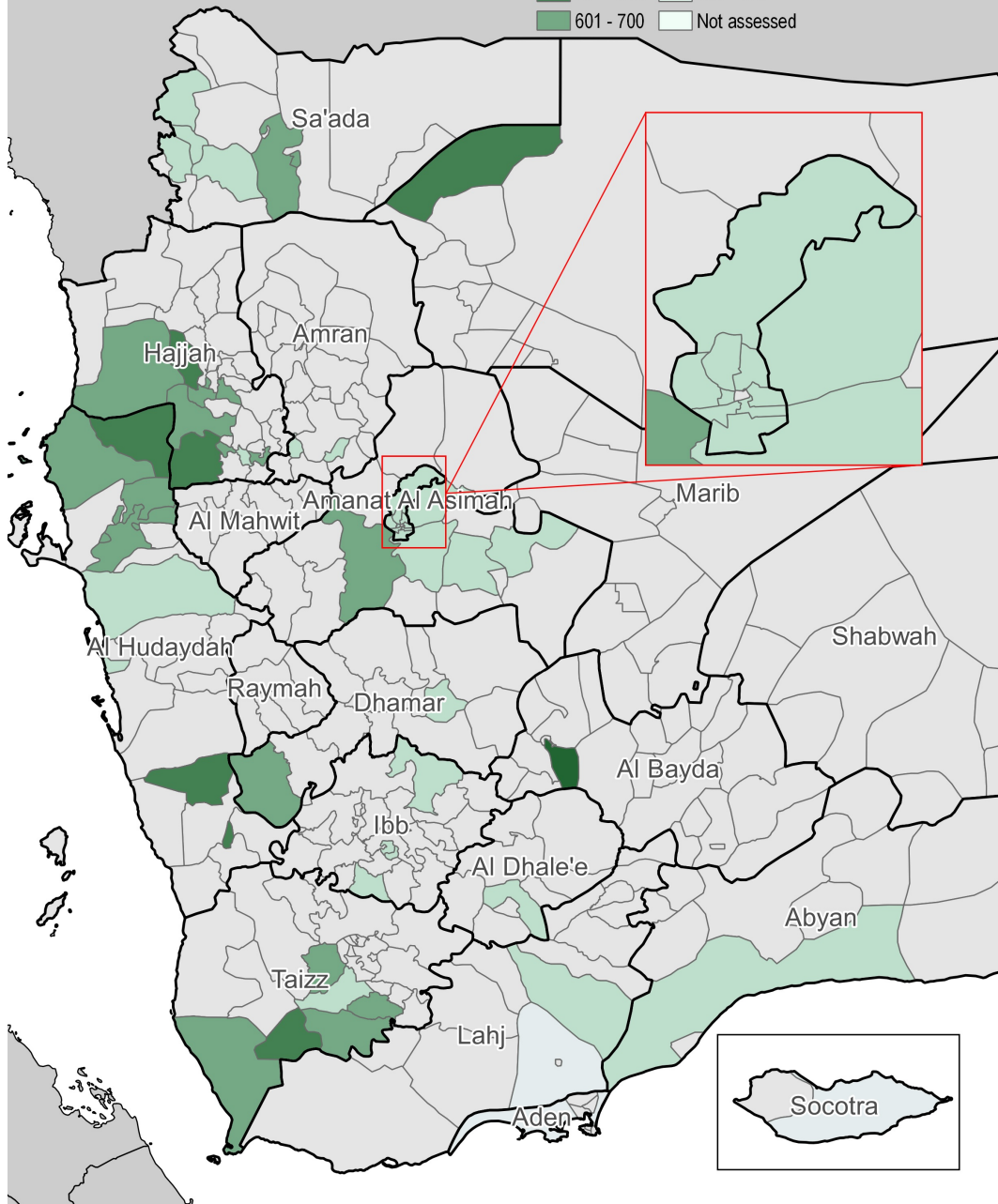
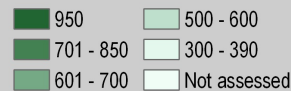


How to read a box plot



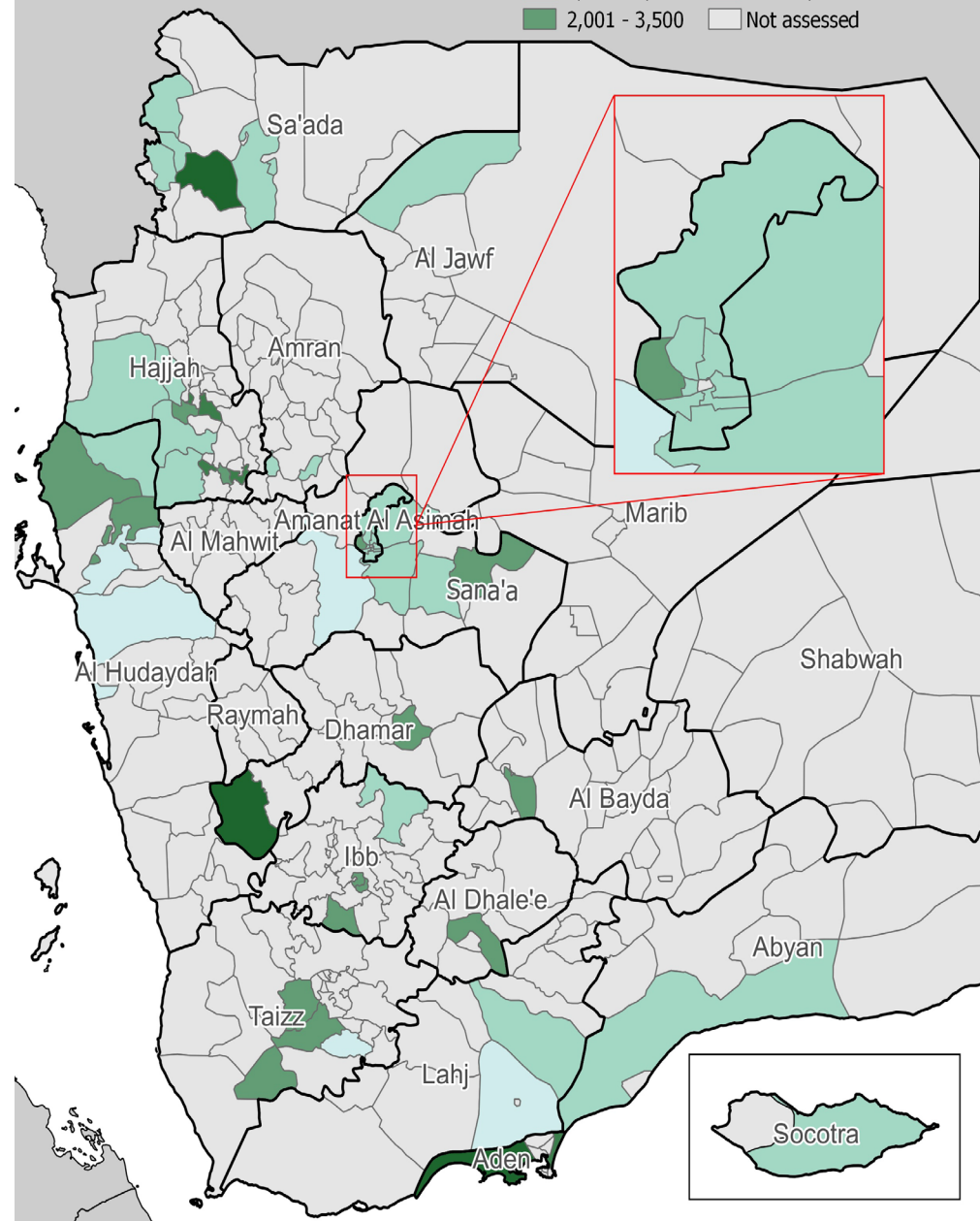
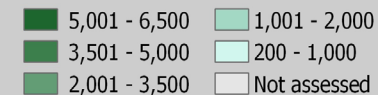
Petrol Prices

Median price of petrol per district per liter (in YER)



Water Trucking Prices

Water Trucking prices per district per cubic meter (YER)



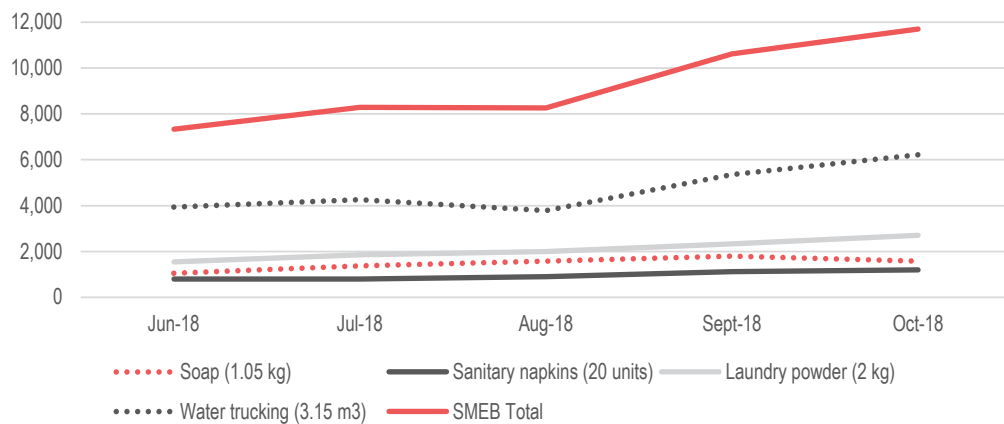
Note: the differences in the number of districts shown between the two maps for fuel and water prices is because the methodology-stipulated requirement for a minimum of three price quotations per district was not met in some areas.

WASH SMEB COST OVERVIEW FOR YEMEN

MEDIAN WASH SMEB PRICES, BY MONTH AND GOVERNORATE (IN YER)

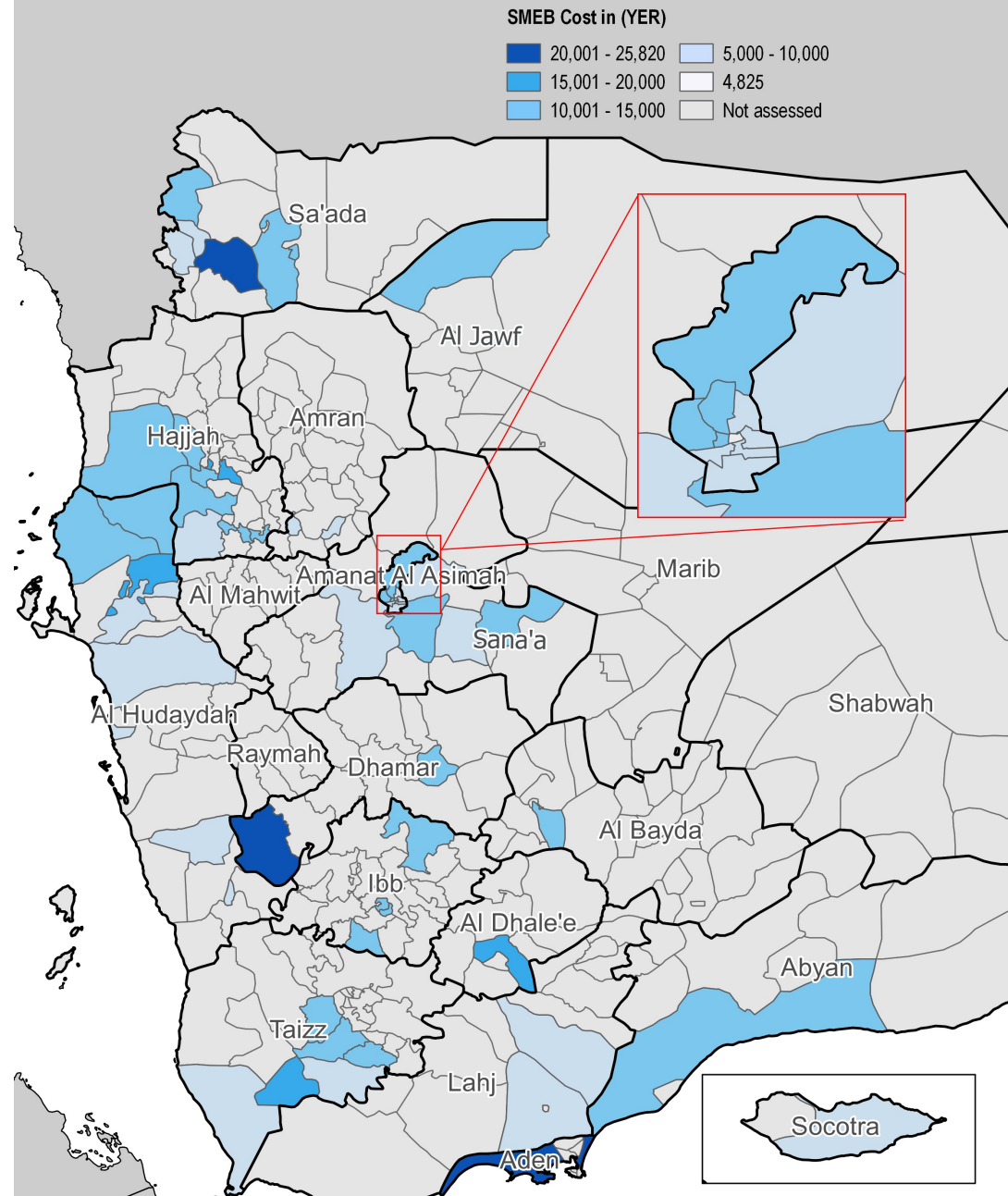
Governorate	Soap (10.5 kg)	Laundry powder (2 kg)	Sanitary napkins (20 units)	Water trucking (3.15 m ³)	WASH SMEB total
Abyan	1,356	1,880	1,200	6,300	17,450
Aden	1,575	3,455	1,300	17,325	23,655
al Bayda	2,100	3,900	1,450	7,403	14,853
al Dhale'e	2,888	2,500	1,300	10,238	16,925
al Hudaydah	1,575	3,000	900	3,938	9,413
al Jawf	2,730	3,400	583	5,355	12,068
Amanat al Asimah	1,549	2,000	1,175	4,725	9,449
Amran	1,575	2,182	1,300	4,750	9,782
Dhamr	1,523	2,750	1,240	14,018	19,530
Hajjah	1,680	2,545	1,000	7,875	13,100
Ibb	1,575	2,182	1,050	7,245	12,052
Laj	1,523	2,000	1,150	2,678	7,350
Sa'ada	1,890	3,200	1,200	4,410	10,700
Sana'a	1,785	2,500	1,350	4,199	9,834
Socotra	1,575	2,800	1,400	3,780	9,555
Taizz	1,601	3,025	1,345	8,190	14,161

MEDIAN WASH SMEB PRICES, BY MONTH AND GOVERNORATE



*The value of the WASH SMEB can vary greatly from one governorate to another according to location, supply chain, and other variables.

WASH SMEB Cost



Note: only complete SMEB are taken into account.

SUPPLY CHAIN OVERVIEW FOR YEMEN

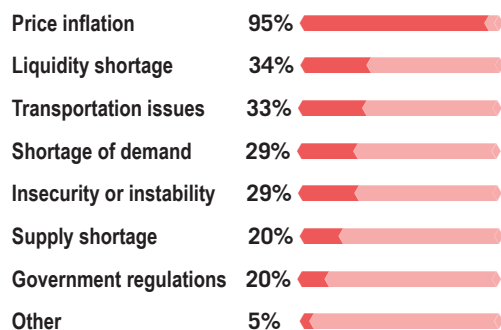
AVERAGE RESTOCKING TIME (DAYS)

Governorate	Fuel Items	WASH Items
Abyan	8	2
Aden	7	1
al Bayda	15	6
al Dhale'e	13	1
al Hudaydah	7	6
al Jawf	8	7
Amanat al Asimah	3	4
Amran	3	2
Dhamar	7	2
Hajjah	7	6
Ibb	6	8
Lahj	4	3
Sa'ada	8	6
Sana'a	10	4
Socotra	4	2
Taizz	4	4
National	7	4

OVERVIEW FOR WATER TRUCKING

- 66%** of water trucking vendor KIs stated that they charged delivery costs based upon the distance between the water source and delivery point. The additional price for 5km is **6,000 YER**, for 10 km **9,000 YER**.
- 71%** of water trucking vendor KIs stated that they sell non-chlorinated water.
- 18%** of water trucking vendor KIs stated that they sell chlorinated water. An additional 11% reported being unaware if the water they sold was chlorinated.
- 94%** of water vendor KIs reported sourcing water from a pumping station or a borehole.
- 2%** of water vendor KIs reported sourcing water from treatment station.
- 3%** of water vendor KIs reported sourcing water from a spring.

MOST REPORTED CONSTRAINTS*



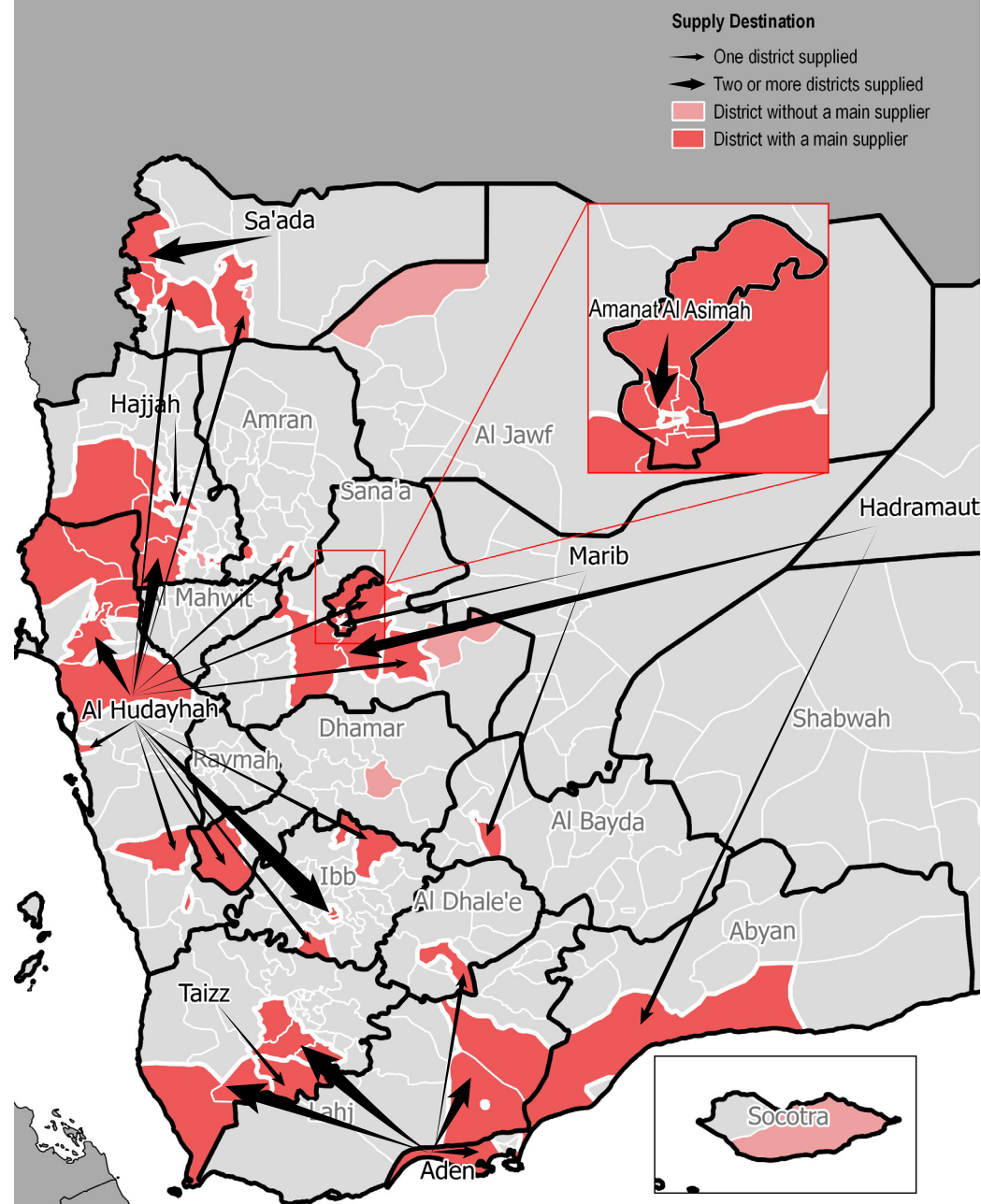
*Values do not add up to 100% as vendor KIs were allowed to select multiple options.

CONSTRAINTS AND CHALLENGES

When asked about the top constraints vendors faced in conducting their business, KIs reported price inflation, liquidity shortage, and transportation issues as their three main constraints.

Moreover, vendor KIs reported insecurity and instability, and shortages in demand (with a reduction in customers able to pay) as barriers. The 5% of vendor KIs who selected "others", mentioned fuel availability and fuel cost as their main challenges.

Petrol and Diesel main supply chains in assessed districts*



*The map shows fuel supply chain inside the same governorate and towards other governorates. District without a main supplier are those district where vendor KIs could not identify the origin of the fuel they sold.

APPENDIX

WHAT IS THE INTERSECTOR CASH AND MARKET WORKING GROUP?

With the emergence of the conflict in 2014, humanitarian actors in Yemen began using cash and vouchers as a response tool to meet the immediate needs of the Yemeni population. The CMWG was established to provide a platform for discussion and setting standards/recommendations on cash and market-based responses (inclusive of cash and vouchers) for the cash actors in Yemen. The JMMI was developed by the CMWG, the WASH Cluster, and REACH in order to harmonize price monitoring amongst WASH actors in Yemen.

ADDITIONAL INFORMATION ON METHODOLOGY

To be assessed by the JMMI, markets must be either a single permanent market, or a local community where multiple commercial areas are located in close proximity to one another. When possible, markets/shops are selected within a single geographical location, where there is at least one wholesaler operating in the market, or multiple areas of commerce within the same geographical location when it is too small, to provide a minimum of three price quotations per assessed items.

Participating organisations train their enumerators on the JMMI methodology and data collection tools using standard training materials developed by REACH. Each month, enumerators conduct KI interviews with market vendors to collect three price quotations for each item from a minimum of three markets per district, from which a median price is calculated.

In addition to price levels, vendors are asked about the location of their supplier, the number of days it takes to restock the items, and the constraints they

are facing in purchasing and selling the items in question. Additional questions are included for water trucking, to gauge the impact of delivery distance upon price level.

Following data collection, REACH compiles and cleans all partner data, normalising prices and cross-checking outliers. The cleaned data is then analysed by commodity and by governorate. To illustrate local variations in prices and availability, REACH uses the collected data to map the price of each type of item in each district. REACH also calculates the WASH SMEB (Survival Minimum Expenditure Baskets), which is composed of four items: soap (1.05 kg), laundry powder (2 kg), sanitary napkins (20 units) and water trucking (3.15 m3). The cleaned data sets are available on the [REACH Resource Centre](#) and are distributed to all participating partners, as well as to relevant clusters and the broader humanitarian community.

LIMITATIONS

Due to issues of access and security across Yemen, the districts included in the JMMI vary on a monthly basis, and as such there are sometimes a limited number of districts for which trends can be assessed over time. Governorate level data is aggregated from the respective districts assessed in a given month, and so the findings are not representative of individual markets. Finally, the market monitoring process has been coordinated remotely by REACH, which inherently presents some challenges in terms of coordination and follow-up with partners. Participating organisations are therefore requested to adopt harmonised data collection methodologies and tools to ensure that the data uploaded is as accurate as possible.

CALCULATION OF LOWEST MEDIAN PRICE

The aggregated median price table is calculated by taking the median of the prices collected across the same market. The reported prices for each district are calculated from the average of the minimum reported prices of the constituent markets assessed. Additionally, national average median prices and percentage change from one month to another are calculated only on data from markets that were assessed in both consecutive months.

ENDNOTES

¹ *Official rate:* retrieved from www.xe.com (15 November 2018). *Parallel market rate:* exchange rates are now collected at district level by REACH partner organisations during data collection.

PARTICIPATING PARTNERS INCLUDE



ABOUT REACH

REACH is a joint initiative that facilitates the development of information tools and products that enhance the capacity of aid actors to make evidence-based decisions in emergency, recovery and development contexts. By doing so, REACH contributes to ensuring that communities affected by emergencies receive the support they need. All REACH activities are conducted in support to and within the framework of inter-agency aid coordination mechanisms. For more information, please visit our website at www.reach-initiative.org, contact us directly at yemen@reach-initiative.org or follow us on Twitter at [@REACH_info](https://twitter.com/REACH_info).