

2019 SNAPSHOT HUMANITARIAN RESPONSE PLAN

OVERVIEW

The conflict in Yemen entered its fifth year in March 2019 and remains the world's worst humanitarian crisis.

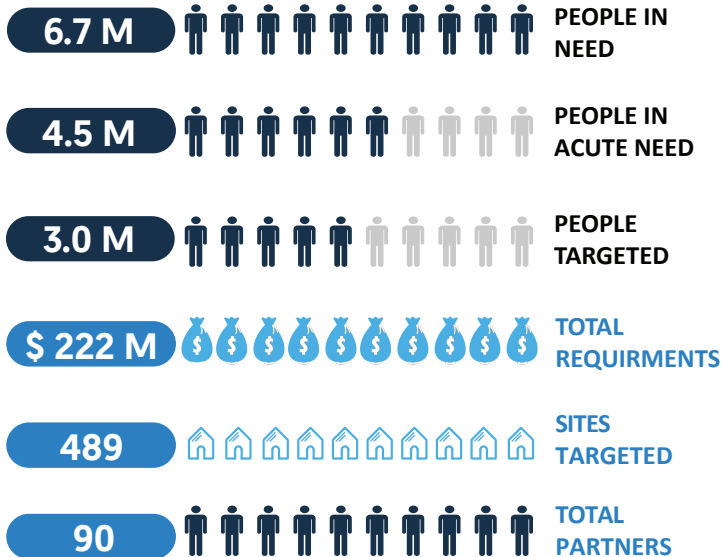
Consequently **Shelter** remains a major humanitarian priority with 2/10 people in need of Shelter/NFI or SMC (Site Management and Coordination) support, with most living in makeshift shelters using inadequate materials to construct their shelters such as plastic sheeting, cardboard, cloths and leaves in areas without adequate access to basic services.

In **IDP Hosting Sites** some 465,000 IDPs live in close to 1,300 Sites, often as a last resort, and are considered among the most vulnerable populations with no means to support more adequate shelter solutions.

Returnees are no better off with at least 10 % with no shelter or settled in makeshift shelters while 6% reside in IDP hosting sites due to multiple factors including damage to their homes, security and safety and limited access to basic services and livelihood opportunities.

There has been an 84% increase in needs from 1.2 M people in 2015 and 24% increase from 5.4 M in 2018 to 6.7 M in 2019. For people with acute needs an increase of 67 % since 2015 or 4.5 M in 2019 an increase of 42% from 2018. The Shelter/NFI/CCCM Cluster target remained at 3 M for 2018 and 2019 with a budget increase from \$195 M in 2018 to \$222 M up 14% in 2019.

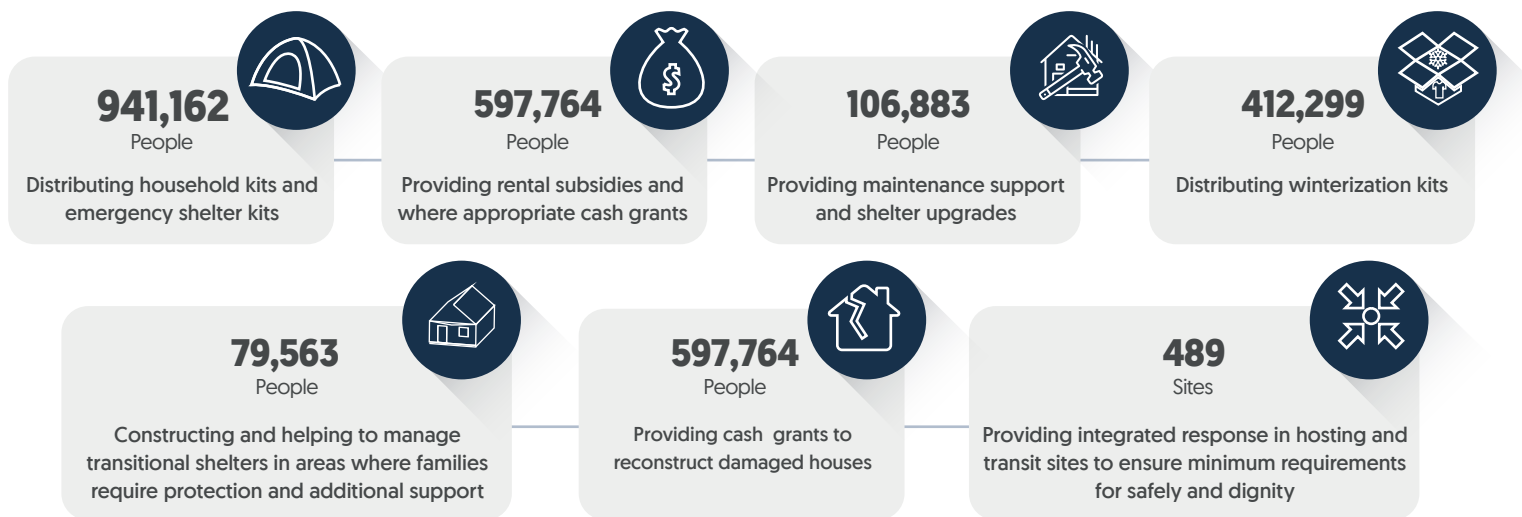
KEY FIGURES



STRATEGIC OBJECTIVES

- 1 Provide safe, appropriate shelter and essential household items to displaced and highly vulnerable families
- 2 Coordinate the delivery of a Minimum Service Package (MSP) in under-served emergency and IDP settlements

ACTIVITIES and TARGET



2019 PRIORITIES

- Decisions are taken as close to the beneficiaries as possible through empowered Sub National Clusters
- Engagement with Donors and private sector improved and initiatives for NNGOs to access more funding developed
- Gap assessment and prioritization of locations and activities enhanced through regular needs Indicator monitoring
- Site Management and Coordination capacity in IDP Hosting Sites strengthened and scaled up
- Emergency response, reach and capacity enhanced through Emergency stocks prepositioning
- Appropriate Shelter solutions and more sustainable interventions promoted
- Analysis and understanding of impact of Cluster activities improved
- Flexible and diverse capacity building initiatives adopted
- Engagement with Strategic Partners and local Authorities enhanced

Shelter / NFI / CCCM Cluster Meetings Calendar for 2019

JANUARY						
S	M	T	W	Th	F	S
		1	2	3	4	5
6	7	8	9	10	11	12
13	14	15	16	17	18	19
20	21	22	23	24	25	26
27	28	29	30	31		

20 National Cluster
27 lbb Sub-Cluster
31 Sana'a Sub-Cluster
28 Sa'adah Sub-Cluster
30 Aden Sub-Cluster
21 Taizz Sub-Cluster
14 AlHudaydah Sub-Cluster
28 SMCAG

JULY						
S	M	T	W	Th	F	S
	1	2	3	4	5	6
7	8	9	10	11	12	13
14	15	16	17	18	19	20
21	22	23	24	25	26	27
28	29	30	31			

14 National Cluster Meeting
23 lbb Sub-Cluster Meeting
25 Sana'a Sub-Cluster
30 Sa'adah Sub-Cluster
24 Aden Sub-Cluster
24 Taizz Sub-Cluster
16 AlHudaydah Sub-Cluster
29 SMCAG

FEBRUARY						
S	M	T	W	Th	F	S
					1	2
3	4	5	6	7	8	9
10	11	12	13	14	15	16
17	18	19	20	21	22	23
24	25	26	27	28		

10 National Cluster Meeting
25 lbb Sub-Cluster Meeting
28 Sana'a Sub-Cluster
25 Sa'adah Sub-Cluster
27 Aden Sub-Cluster
19 Taizz Sub-Cluster
18 AlHudaydah Sub-Cluster
25 SMCAG

AUGUST						
S	M	T	W	Th	F	S
				1	2	3
4	5	6	7	8	9	10
11	12	13	14	15	16	17
18	19	20	21	22	23	24
25	26	27	28	29	30	31

11 National Cluster Meeting
26 lbb Sub-Cluster Meeting
29 Sana'a Sub-Cluster
26 Sa'adah Sub-Cluster
28 Aden Sub-Cluster
26 Taizz Sub-Cluster
20 AlHudaydah Sub-Cluster
26 SMCAG

MARCH						
S	M	T	W	Th	F	S
					1	2
3	4	5	6	7	8	9
10	11	12	13	14	15	16
17	18	19	20	21	22	23
24	25	26	27	28	29	30

10 National Cluster Meeting
25 lbb Sub-Cluster Meeting
28 Sana'a Sub-Cluster
21 Sa'adah Sub-Cluster
27 Aden Sub-Cluster
19 Taizz Sub-Cluster
19 AlHudaydah Sub-Cluster
25 SMCAG

SEPTEMBER						
S	M	T	W	Th	F	S
	1	2	3	4	5	6
7	8	9	10	11	12	13
14	15	16	17	18	19	20
21	22	23	24	25	26	27
28	29	30				

14 National Cluster Meeting
24 lbb Sub-Cluster Meeting
25 Sana'a Sub-Cluster
25 Sa'adah Sub-Cluster
25 Aden Sub-Cluster
24 Taizz Sub-Cluster
17 AlHudaydah Sub-Cluster
29 SMCAG

APRIL						
S	M	T	W	Th	F	S
					1	2
3	4	5	6	7	8	9
10	11	12	13	14	15	16
17	18	19	20	21	22	23
24	25	26	27	28	29	30

14 National Cluster Meeting
23 lbb Sub-Cluster Meeting
25 Sana'a Sub-Cluster
25 Sa'adah Sub-Cluster
24 Aden Sub-Cluster
29 Taizz Sub-Cluster
16 AlHudaydah Sub-Cluster
29 SMCAG

OCTOBER						
S	M	T	W	Th	F	S
		1	2	3	4	5
6	7	8	9	10	11	12
13	14	15	16	17	18	19
20	21	22	23	24	25	26
27	28	29	30	31		

13 National Cluster Meeting
21 lbb Sub-Cluster Meeting
31 Sana'a Sub-Cluster
28 Sa'adah Sub-Cluster
30 Aden Sub-Cluster
24 Taizz Sub-Cluster
22 AlHudaydah Sub-Cluster
28 SMCAG

MAY						
S	M	T	W	Th	F	S
			1	2	3	4
5	6	7	8	9	10	11
12	13	14	15	16	17	18
19	20	21	22	23	24	25
26	27	28	29	30	31	

12 National Cluster Meeting
20 lbb Sub-Cluster Meeting
30 Sana'a Sub-Cluster
28 Sa'adah Sub-Cluster
29 Aden Sub-Cluster
28 Taizz Sub-Cluster
21 AlHudaydah Sub-Cluster
27 SMCAG

NOVEMBER						
S	M	T	W	Th	F	S
					1	2
3	4	5	6	7	8	9
10	11	12	13	14	15	16
17	18	19	20	21	22	23
24	25	26	27	28	29	30

10 National Cluster Meeting
25 lbb Sub-Cluster Meeting
28 Sana'a Sub-Cluster
26 Sa'adah Sub-Cluster
27 Aden Sub-Cluster
26 Taizz Sub-Cluster
19 AlHudaydah Sub-Cluster
25 SMCAG

JUNE						
S	M	T	W	Th	F	S
						1
2	3	4	5	6	7	8
9	10	11	12	13	14	15
16	17	18	19	20	21	22
23	24	25	26	27	28	29

9 National Cluster Meeting
24 lbb Sub-Cluster Meeting
27 Sana'a Sub-Cluster
26 Sa'adah Sub-Cluster
26 Aden Sub-Cluster
26 Taizz Sub-Cluster
18 AlHudaydah Sub-Cluster
24 SMCAG

DECEMBER						
S	M	T	W	Th	F	S
1	2	3	4	5	6	7
8	9	10	11	12	13	14
15	16	17	18	19	20	21
22	23	24	25	26	27	28
29	30	31				

8 National Cluster Meeting
23 lbb Sub-Cluster Meeting
26 Sana'a Sub-Cluster
25 Sa'adah Sub-Cluster
25 Aden Sub-Cluster
24 Taizz Sub-Cluster
17 AlHudaydah Sub-Cluster
30 SMCAG

Note: Meetings usually starts at 10am and invitations will be shared by the National / Sub-National Cluster Coordination Team (CCT) prior to any meeting to confirm the meeting or suggest alternative date based on the security situation.